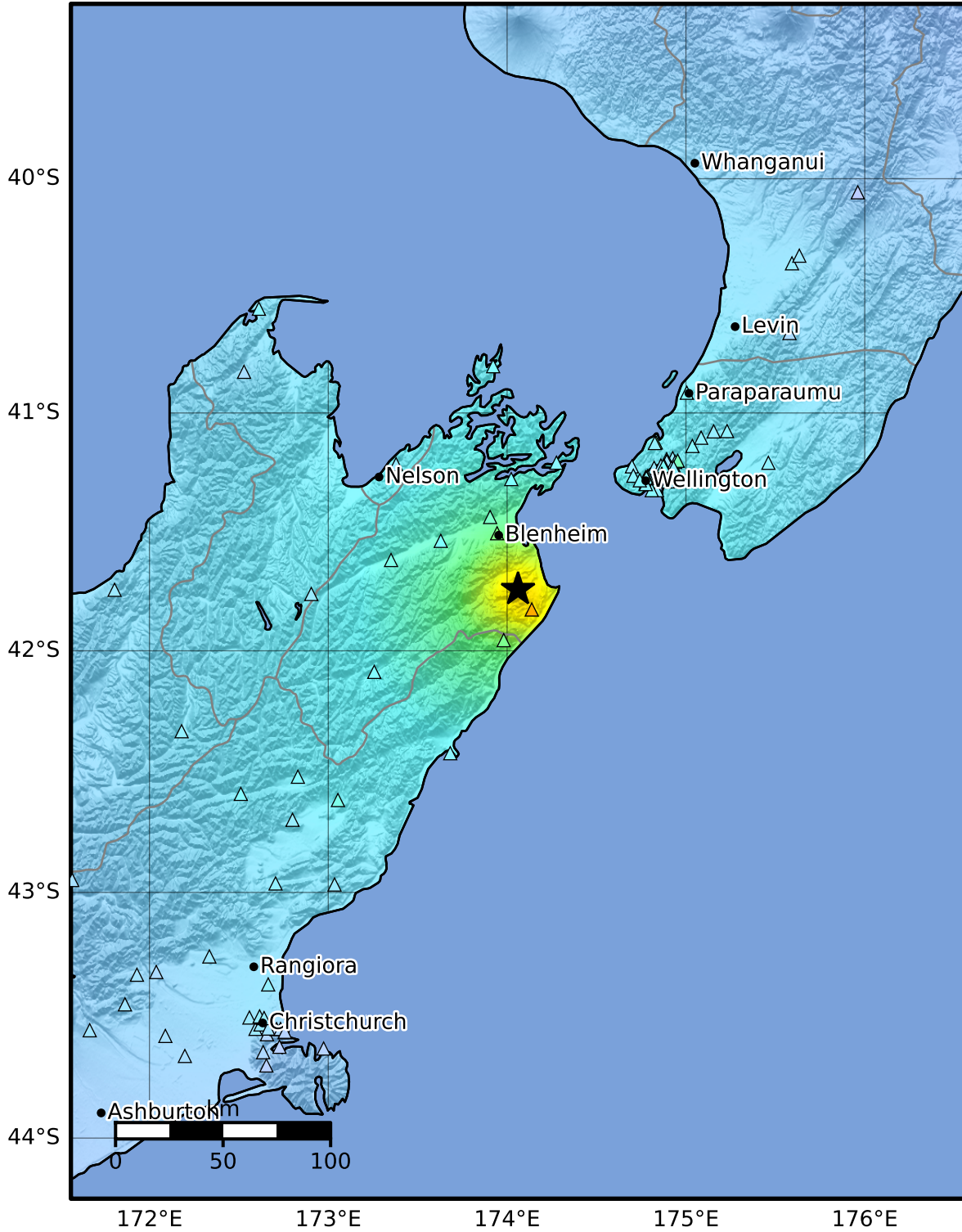


Macroseismic Intensity Map GNS Science

ShakeMap: Marlborough

Aug 16, 2013 03:09:07 UTC M5.4 S41.74 E174.06 Depth: 7.5km ID:2013p613867



| SHAKING | Not felt | Weak | Light | Moderate | Strong | Very strong | Severe | Violent | Extreme |
|-----------|----------|---------------|-----------|------------|-----------|-------------|----------------|-----------|------------|
| DAMAGE | None | None | None | Very light | Light | Moderate | Moderate/heavy | Heavy | Very heavy |
| PGA(%g) | <0.0464 | 0.29 | 1.63 | 5.16 | 12.5 | 22.4 | 40.2 | 72.2 | >129 |
| PGV(cm/s) | <0.0215 | 0.125 | 1.04 | 4.31 | 14.5 | 26.4 | 48.3 | 88.4 | >162 |
| INTENSITY | I | II-III | IV | V | VI | VII | VIII | IX | X+ |

Scale based on Moratalla et al.(2021) and Worden et al.(2012) Version 1: Processed 2025-02-22T02:43:36Z
 Δ Seismic Instrument ○ Reported Intensity ★ Epicenter