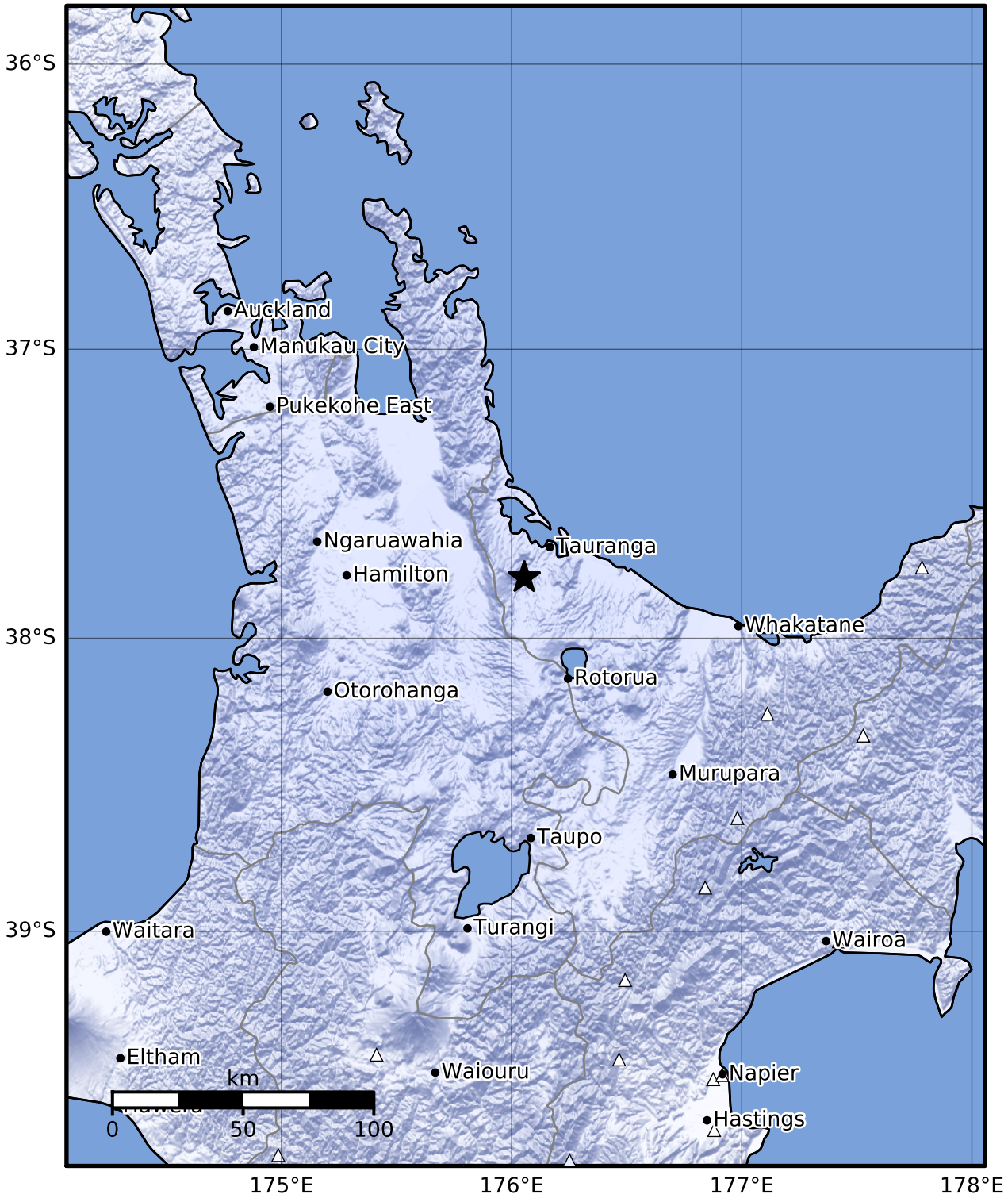


Macroseismic Intensity Map GNS Science  
 ShakeMap: Bay of Plenty  
 May 10, 2022 11:45:42 UTC M4.1 S37.79 E176.06 Depth: 269.7km  
 ID:2022p349972\_20220510114629



SHAKING	Not felt	Weak	Light	Moderate	Strong	Very strong	Severe	Violent	Extreme
DAMAGE	None	None	None	Very light	Light	Moderate	Moderate/heavy	Heavy	Very heavy
PGA(%g)	<0.0445	0.24	1.36	4.31	10.5	18.8	33.8	60.6	>109
PGV(cm/s)	<0.0177	0.104	0.86	3.52	11.7	21.4	39	71	>129
INTENSITY	I	II-III	IV	V	VI	VII	VIII	IX	X+

Scale based on Moratalla et al. (2020)

Version 10: Processed 2022-05-11T11:46:21Z

△ Seismic Instrument ○ Reported Intensity

★ Epicenter

