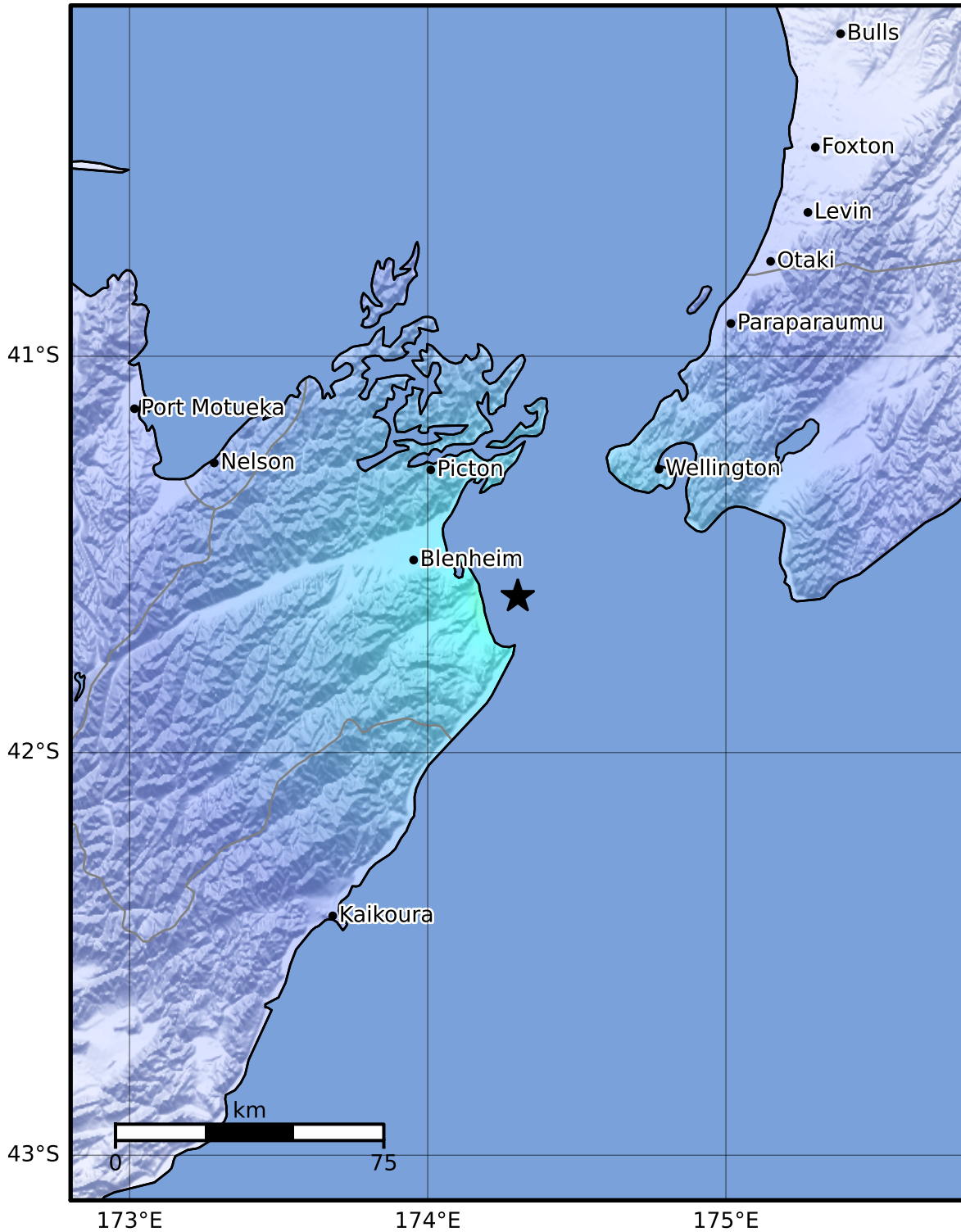


Macroseismic Intensity Map GNS Science

ShakeMap: Marlborough

Oct 24, 2022 02:39:22 UTC M3.5 S41.61 E174.30 Depth: 9.0km ID:2022p800299



SHAKING	Not felt	Weak	Light	Moderate	Strong	Very strong	Severe	Violent	Extreme
DAMAGE	None	None	None	Very light	Light	Moderate	Moderate/heavy	Heavy	Very heavy
PGA(%g)	<0.0464	0.29	1.63	5.16	12.5	22.4	40.2	72.2	>129
PGV(cm/s)	<0.0215	0.125	1.04	4.31	14.5	26.4	48.3	88.4	>162
INTENSITY	I	II-III	IV	V	VI	VII	VIII	IX	X+

Scale based on Moratalla et al.(2021) and Worden et al.(2012) Version 1: Processed 2022-10-24T02:42:35Z

△ Seismic Instrument ○ Reported Intensity

★ Epicenter