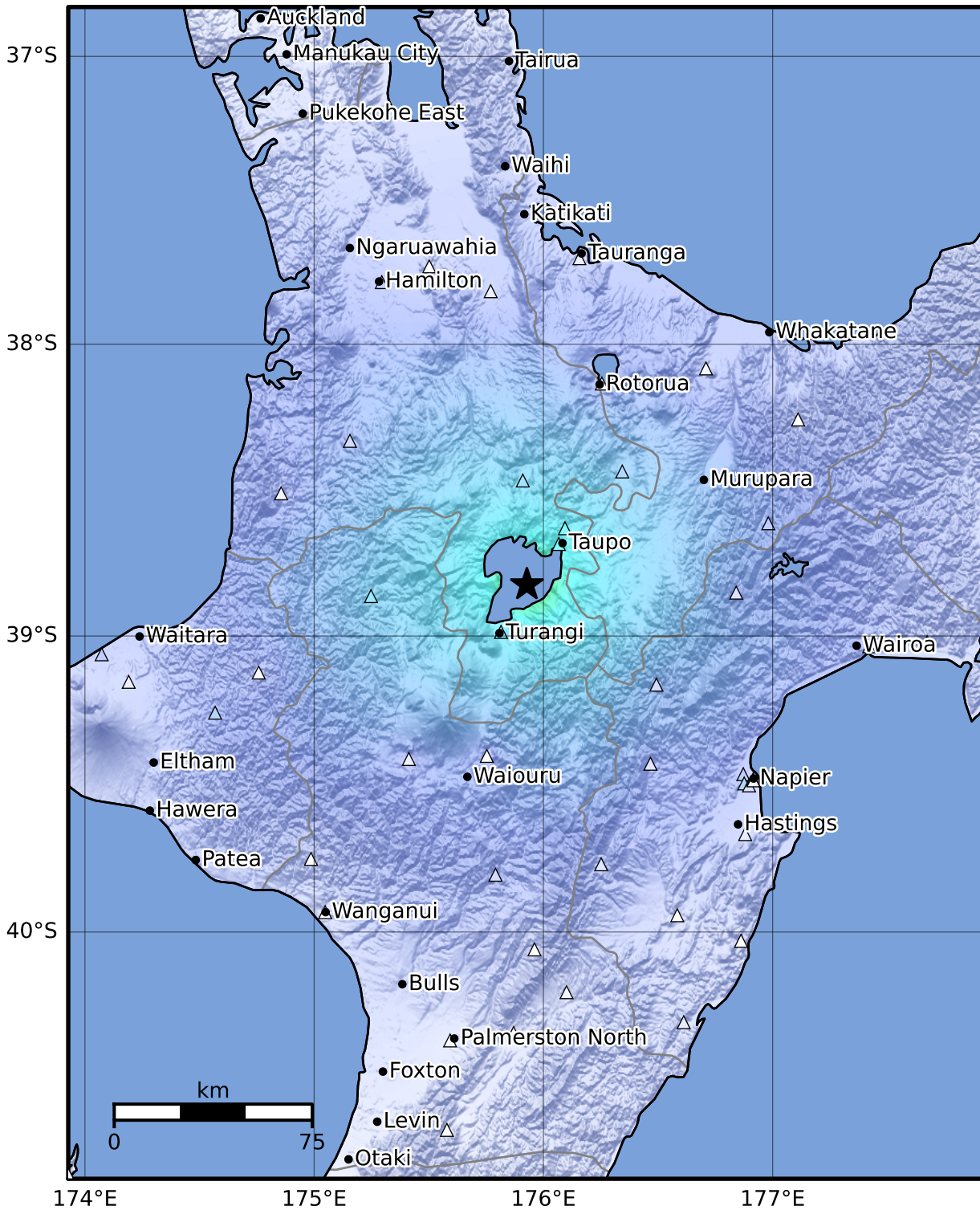


Macroseismic Intensity Map GNS Science

ShakeMap: Taupo

Nov 30, 2022 11:40:14 UTC M4.3 S38.83 E175.93 Depth: 5.0km ID:2022p901313



| SHAKING   | Not felt | Weak   | Light | Moderate   | Strong | Very strong | Severe         | Violent | Extreme    |
|-----------|----------|--------|-------|------------|--------|-------------|----------------|---------|------------|
| DAMAGE    | None     | None   | None  | Very light | Light  | Moderate    | Moderate/heavy | Heavy   | Very heavy |
| PGA(%g)   | <0.0464  | 0.29   | 1.63  | 5.16       | 12.5   | 22.4        | 40.2           | 72.2    | >129       |
| PGV(cm/s) | <0.0215  | 0.125  | 1.04  | 4.31       | 14.5   | 26.4        | 48.3           | 88.4    | >162       |
| INTENSITY | I        | II-III | IV    | V          | VI     | VII         | VIII           | IX      | X+         |

Scale based on Moratalla et al.(2021) and Worden et al.(2012) Version 4: Processed 2022-12-08T03:24:15Z

△ Seismic Instrument ○ Reported Intensity

★ Epicenter

