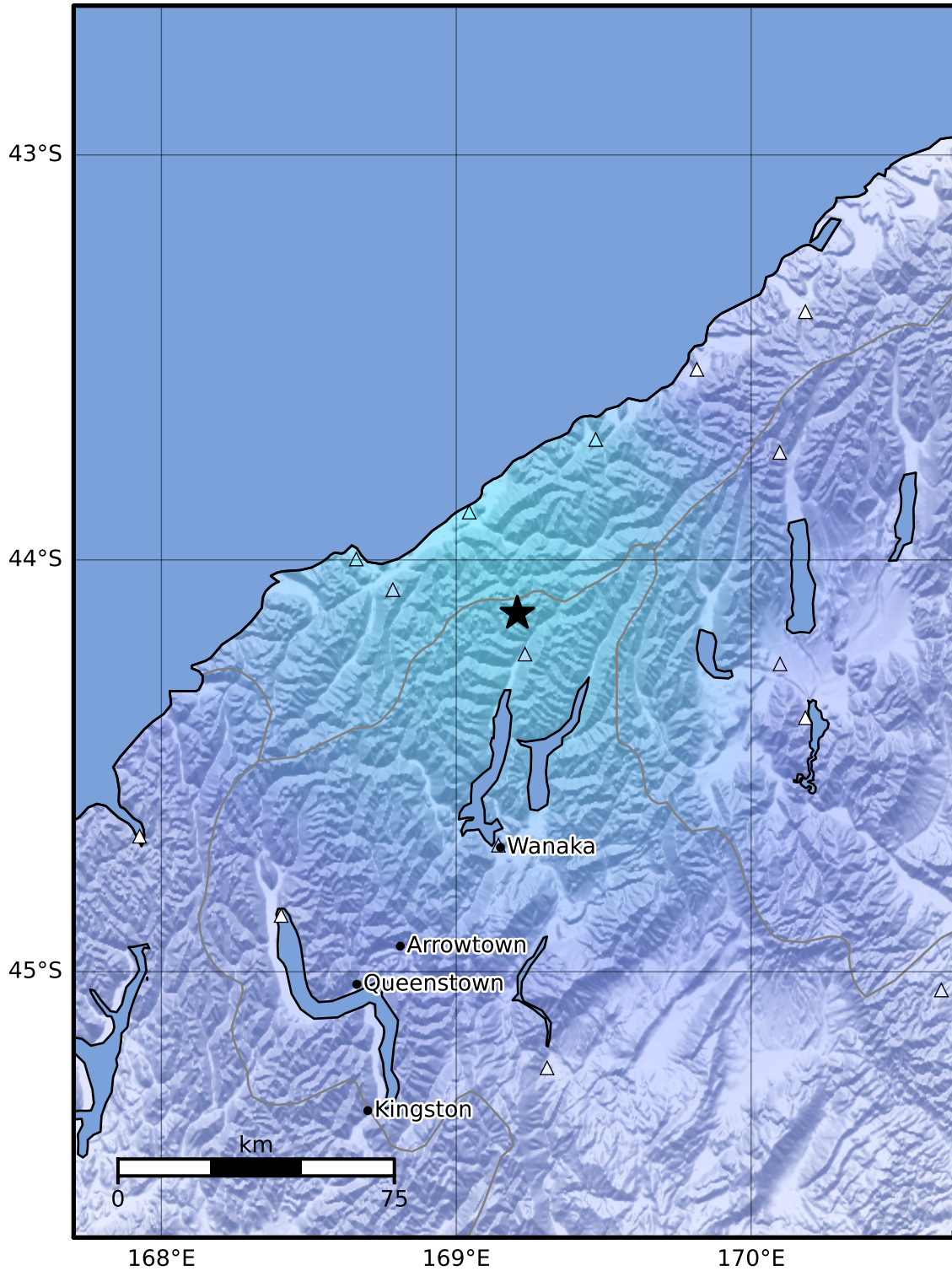


Macroseismic Intensity Map GNS Science
ShakeMap: West Coast

Aug 03, 2023 01:59:38 UTC M3.8 S44.13 E169.21 Depth: 41.0km ID:2023p578602



SHAKING	Not felt	Weak	Light	Moderate	Strong	Very strong	Severe	Violent	Extreme
DAMAGE	None	None	None	Very light	Light	Moderate	Moderate/heavy	Heavy	Very heavy
PGA(%g)	<0.0464	0.29	1.63	5.16	12.5	22.4	40.2	72.2	>129
PGV(cm/s)	<0.0215	0.125	1.04	4.31	14.5	26.4	48.3	88.4	>162
INTENSITY	I	II-III	IV	V	VI	VII	VIII	IX	X+

Scale based on Moratalla et al.(2021) and Worden et al.(2012) Version 13: Processed 2023-08-04T02:00:30Z

△ Seismic Instrument ○ Reported Intensity

★ Epicenter