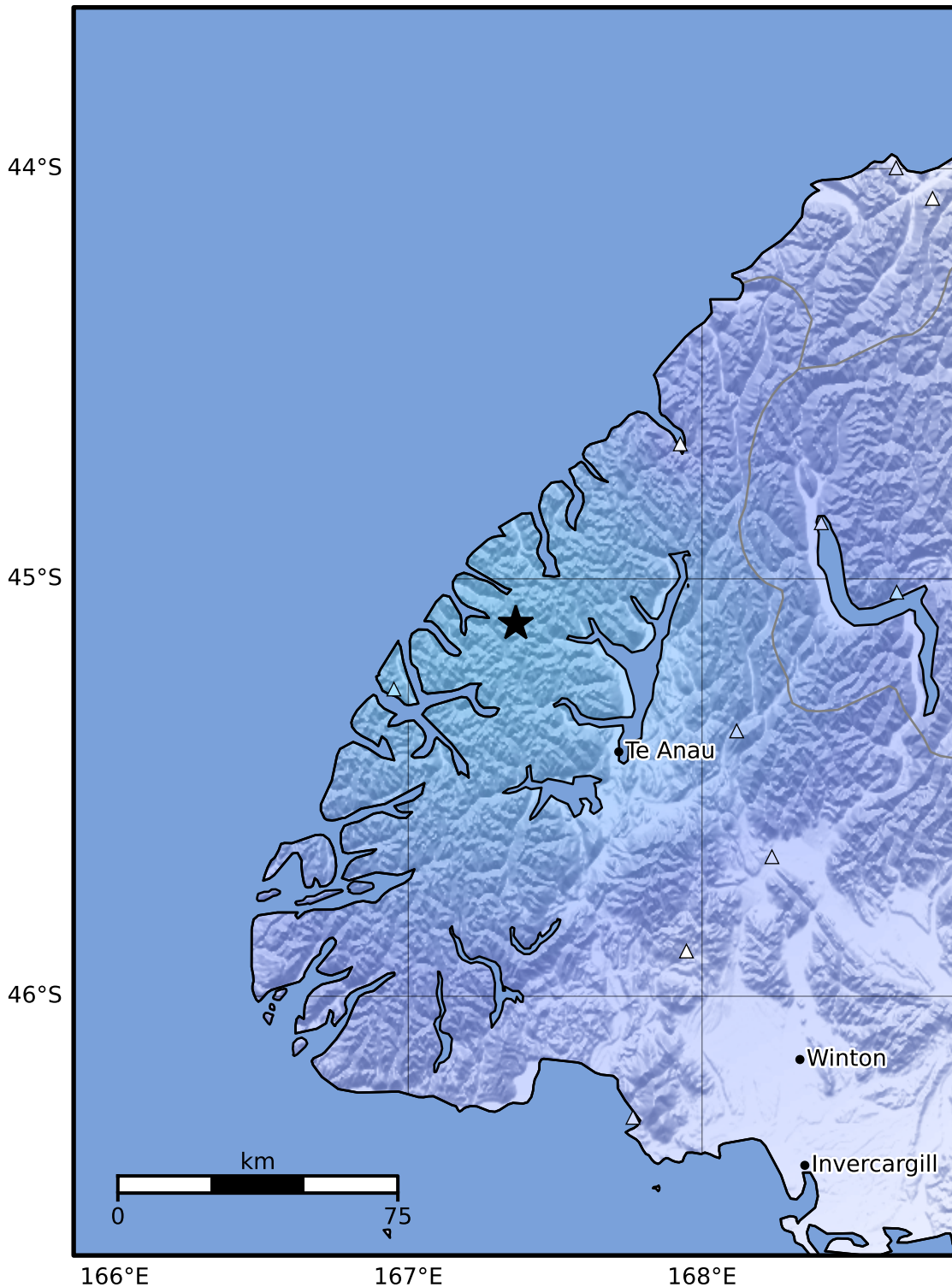


Macroseismic Intensity Map GNS Science  
ShakeMap: Fiordland

Dec 02, 2024 08:06:35 UTC M3.8 S45.11 E167.37 Depth: 68.4km ID:2024p909021



| SHAKING   | Not felt | Weak          | Light     | Moderate   | Strong    | Very strong | Severe         | Violent   | Extreme    |
|-----------|----------|---------------|-----------|------------|-----------|-------------|----------------|-----------|------------|
| DAMAGE    | None     | None          | None      | Very light | Light     | Moderate    | Moderate/heavy | Heavy     | Very heavy |
| PGA(%g)   | <0.0464  | 0.29          | 1.63      | 5.16       | 12.5      | 22.4        | 40.2           | 72.2      | >129       |
| PGV(cm/s) | <0.0215  | 0.125         | 1.04      | 4.31       | 14.5      | 26.4        | 48.3           | 88.4      | >162       |
| INTENSITY | <b>I</b> | <b>II-III</b> | <b>IV</b> | <b>V</b>   | <b>VI</b> | <b>VII</b>  | <b>VIII</b>    | <b>IX</b> | <b>X+</b>  |

Scale based on Moratalla et al.(2021) and Worden et al.(2012) Version 3: Processed 2024-12-02T08:18:33Z  
 △ Seismic Instrument ○ Reported Intensity ★ Epicenter