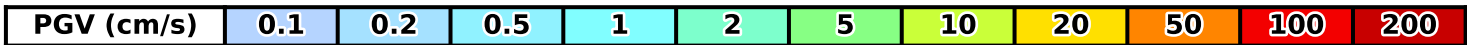
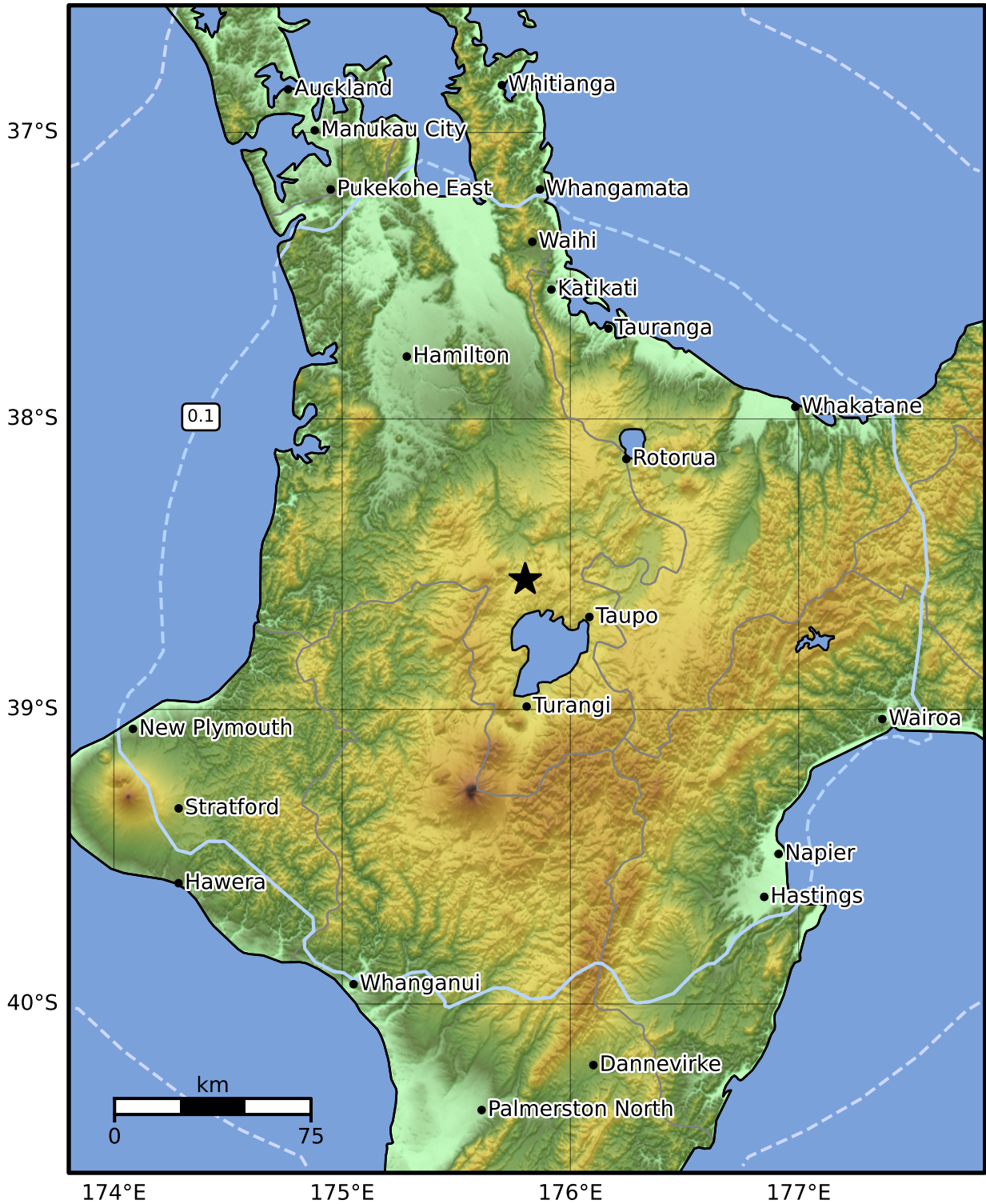


Peak Ground Velocity Map GNS Science

ShakeMap: felt

Dec 19, 1997 17:21:15 UTC M5.0 S38.55 E175.80 Depth: 162.3km ID:1212269



Scale based on Moratalla et al.(2021) and Worden et al.(2012) Version 1: Processed 2025-02-22T11:39:26Z

△ Seismic Instrument ○ Reported Intensity ★ Epicenter