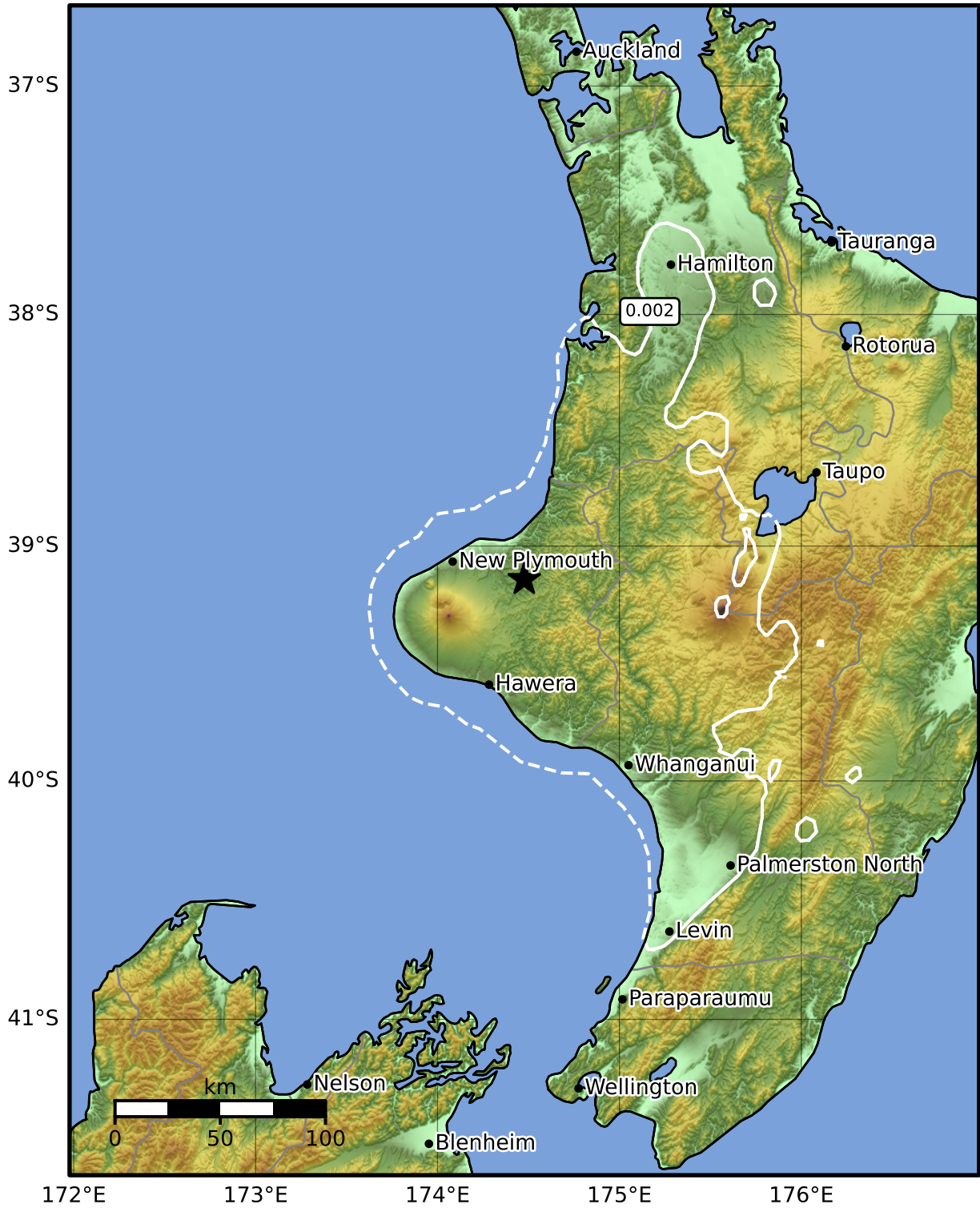


Peak Ground Velocity Map GNS Science
ShakeMap:

Jul 04, 1998 07:47:47 UTC M5.1 S39.14 E174.48 Depth: 601.5km ID:1263314



PGV (cm/s)	0.1	0.2	0.5	1	2	5	10	20	50	100	200
------------	-----	-----	-----	---	---	---	----	----	----	-----	-----

Scale based on Moratalla et al.(2021) and Worden et al.(2012) Version 1: Processed 2025-02-22T11:36:39Z

△ Seismic Instrument ○ Reported Intensity ★ Epicenter