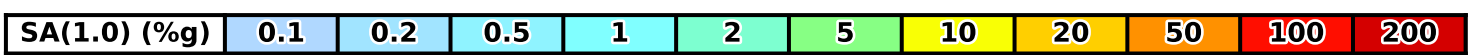
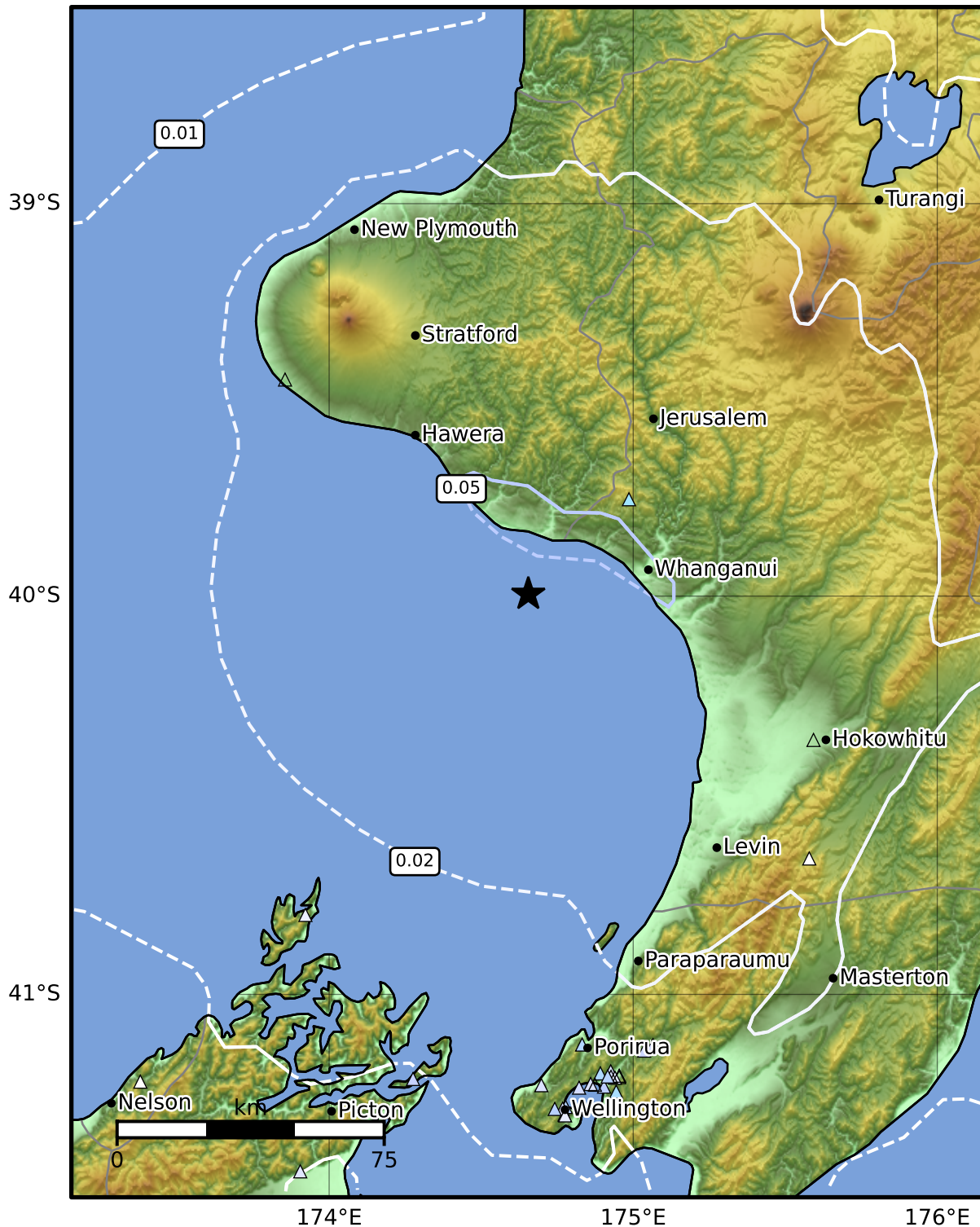


1.0 Second Peak Spectral Acceleration Map GNS Science
ShakeMap: Whanganui Basin

Mar 17, 2012 13:05:18 UTC M3.9 S39.99 E174.66 Depth: 120.4km ID:2012p206879



Scale based on Moratalla et al.(2021) and Worden et al.(2012) Version 1: Processed 2025-02-24T22:40:22Z
 Δ Seismic Instrument ○ Reported Intensity ★ Epicenter



Te Whakaahuatanga Tere o ngā Rū Whenua me ngā Parawhenua
R-CET Rapid Characterisation of Earthquakes and Tsunamis
 A GNS Science Led Research Programme