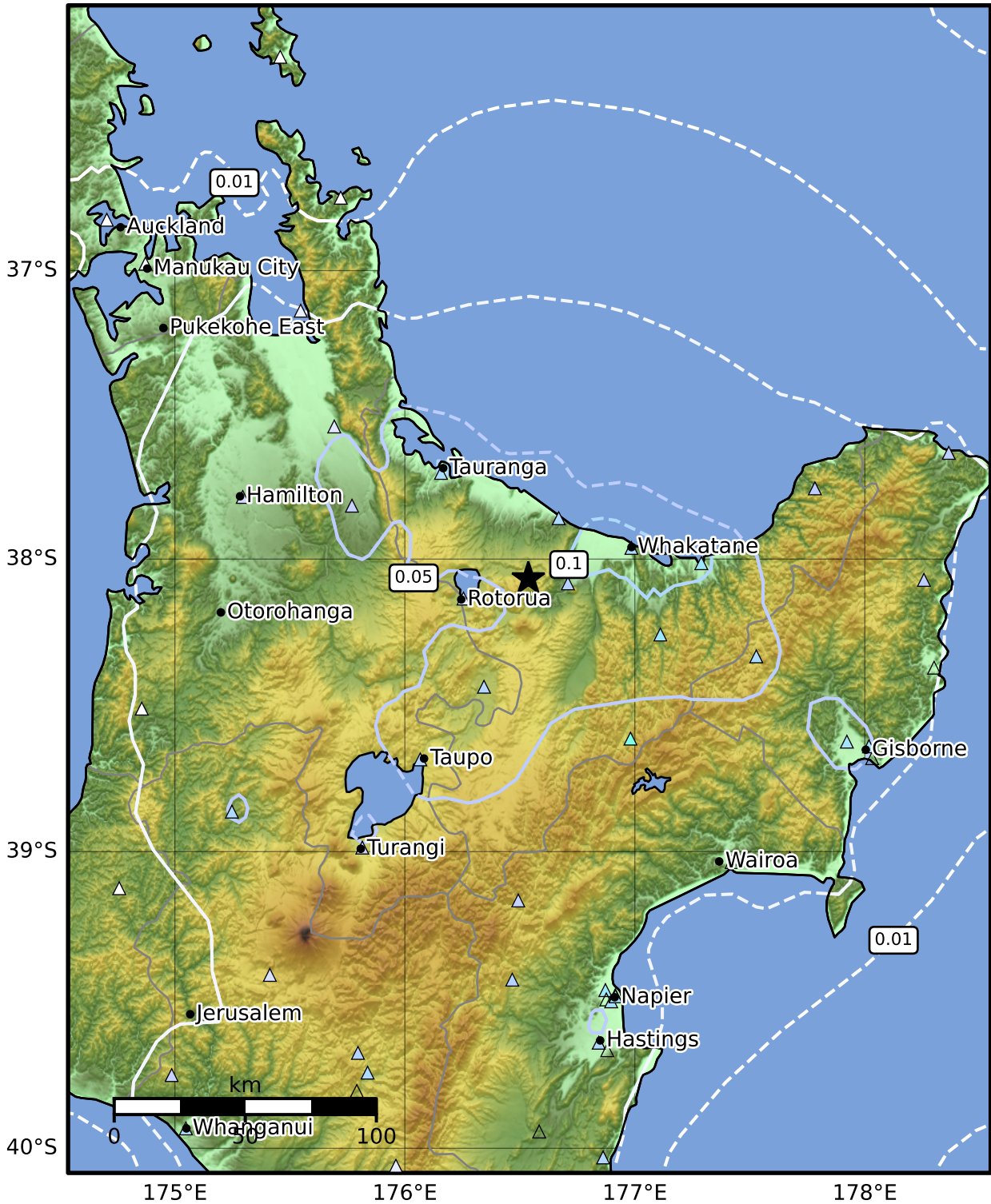


1.0 Second Peak Spectral Acceleration Map GNS Science

ShakeMap:

Jan 11, 2016 00:14:39 UTC M4.1 S38.07 E176.54 Depth: 137.8km ID:2016p027054



SA(1.0) (%g)	0.1	0.2	0.5	1	2	5	10	20	50	100	200
--------------	-----	-----	-----	---	---	---	----	----	----	-----	-----

Scale based on Moratalla et al.(2021) and Worden et al.(2012) Version 1: Processed 2025-02-24T07:51:13Z

△ Seismic Instrument ○ Reported Intensity ★ Epicenter