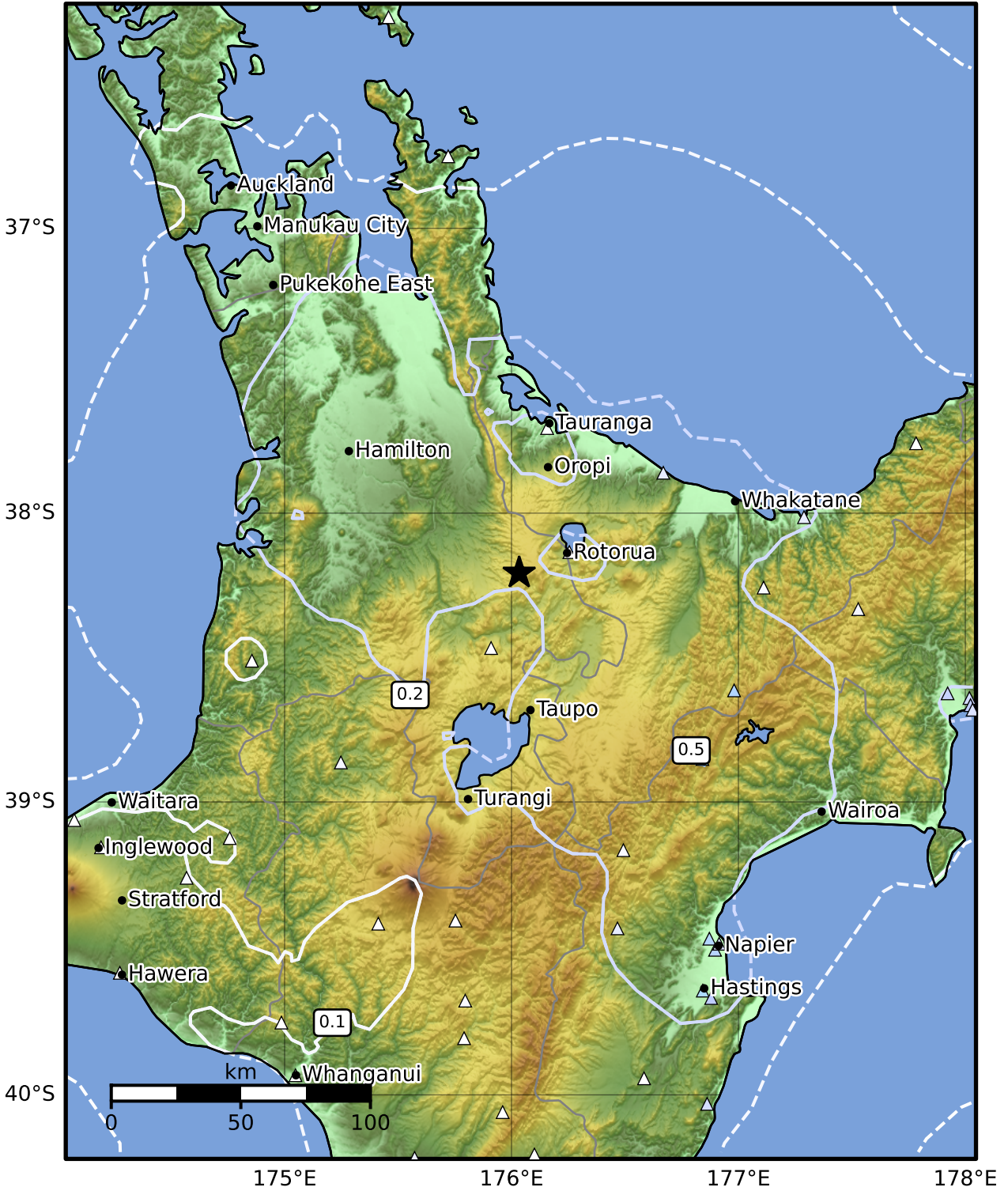


0.3 Second Peak Spectral Acceleration Map GNS Science

ShakeMap:

Dec 22, 2016 22:50:32 UTC M4.1 S38.21 E176.03 Depth: 157.9km ID:2016p964734



SA(0.3) (%g)	0.1	0.2	0.5	1	2	5	10	20	50	100	200
---------------------	------------	------------	------------	----------	----------	----------	-----------	-----------	-----------	------------	------------

Scale based on Moratalla et al.(2021) and Worden et al.(2012) Version 1: Processed 2025-02-24T04:36:08Z

△ Seismic Instrument ○ Reported Intensity ★ Epicenter



Te Whakaahuatanga Tere o ngā Rū Whenua me ngā Parawhenua
R-CET Rapid Characterisation of Earthquakes and Tsunamis
 A GNS Science Led Research Programme