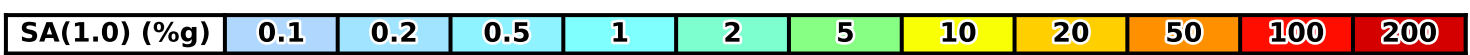
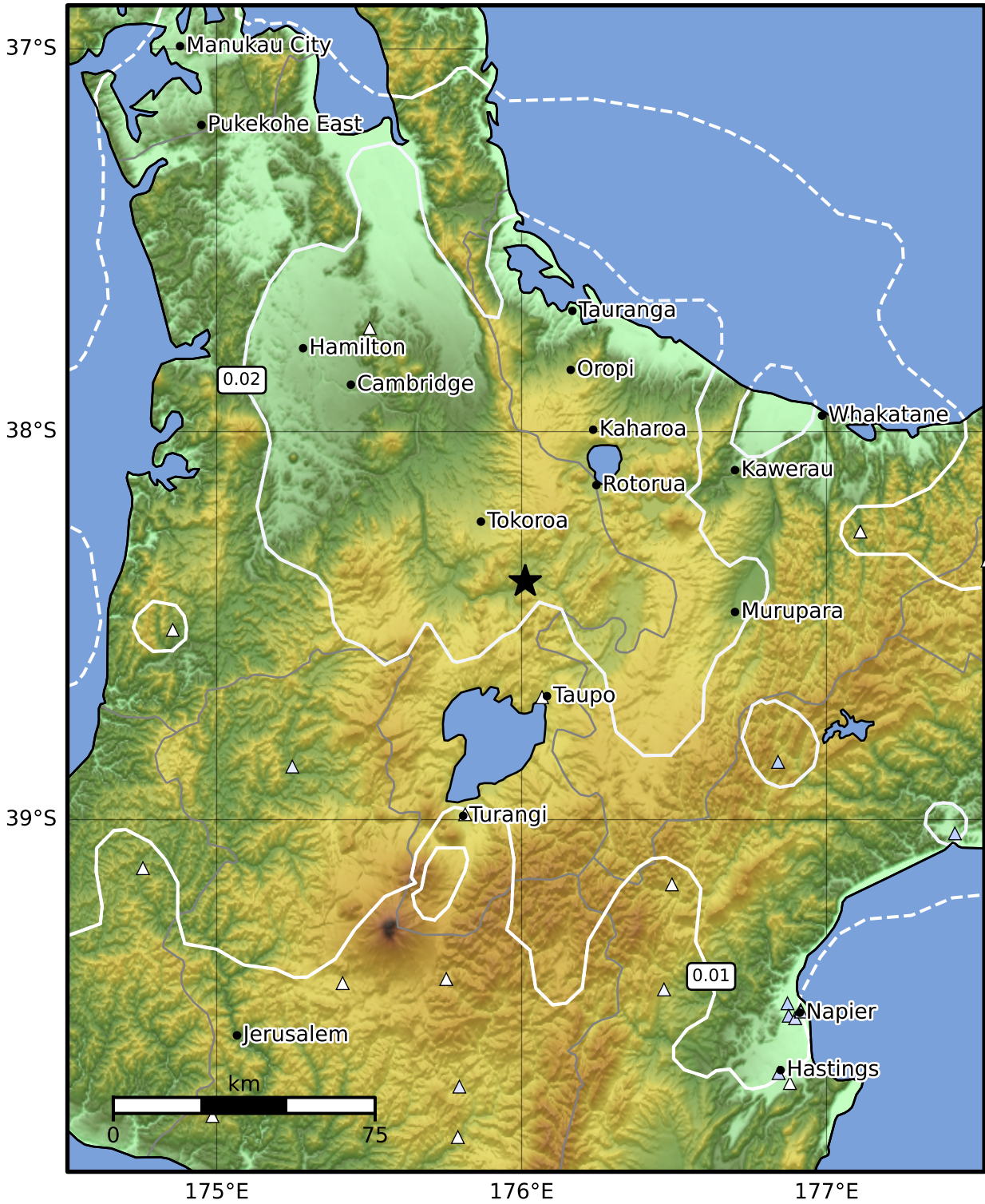


1.0 Second Peak Spectral Acceleration Map GNS Science
ShakeMap: Waikato

Aug 05, 2017 05:21:41 UTC M4.0 S38.39 E176.01 Depth: 154.1km ID:2017p584387



Scale based on Moratalla et al.(2021) and Worden et al.(2012) Version 1: Processed 2025-02-24T11:53:14Z

△ Seismic Instrument ○ Reported Intensity ★ Epicenter



Te Whakaahuatanga Tere o ngā Rū Whenua me ngā Parawhenua
R-CET Rapid Characterisation of Earthquakes and Tsunamis
A GNS Science Led Research Programme