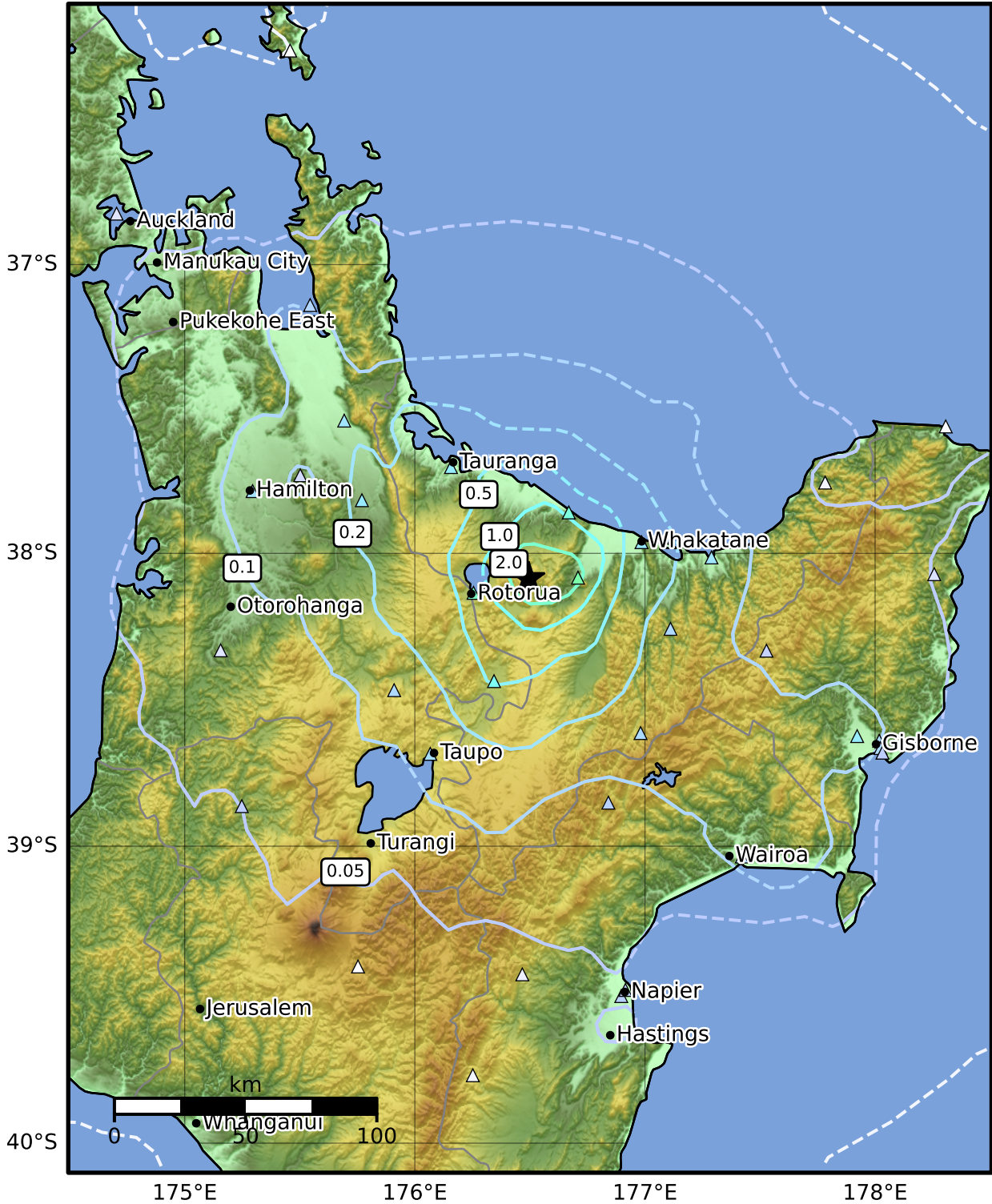


1.0 Second Peak Spectral Acceleration Map GNS Science
ShakeMap: Rotorua

Jan 24, 2021 19:12:34 UTC M4.7 S38.09 E176.49 Depth: 5.0km ID:2021p064325



SA(1.0) (%g)	0.1	0.2	0.5	1	2	5	10	20	50	100	200
---------------------	------------	------------	------------	----------	----------	----------	-----------	-----------	-----------	------------	------------

Scale based on Moratalla et al.(2021) and Worden et al.(2012) Version 1: Processed 2025-02-23T05:52:17Z

△ Seismic Instrument ○ Reported Intensity ★ Epicenter