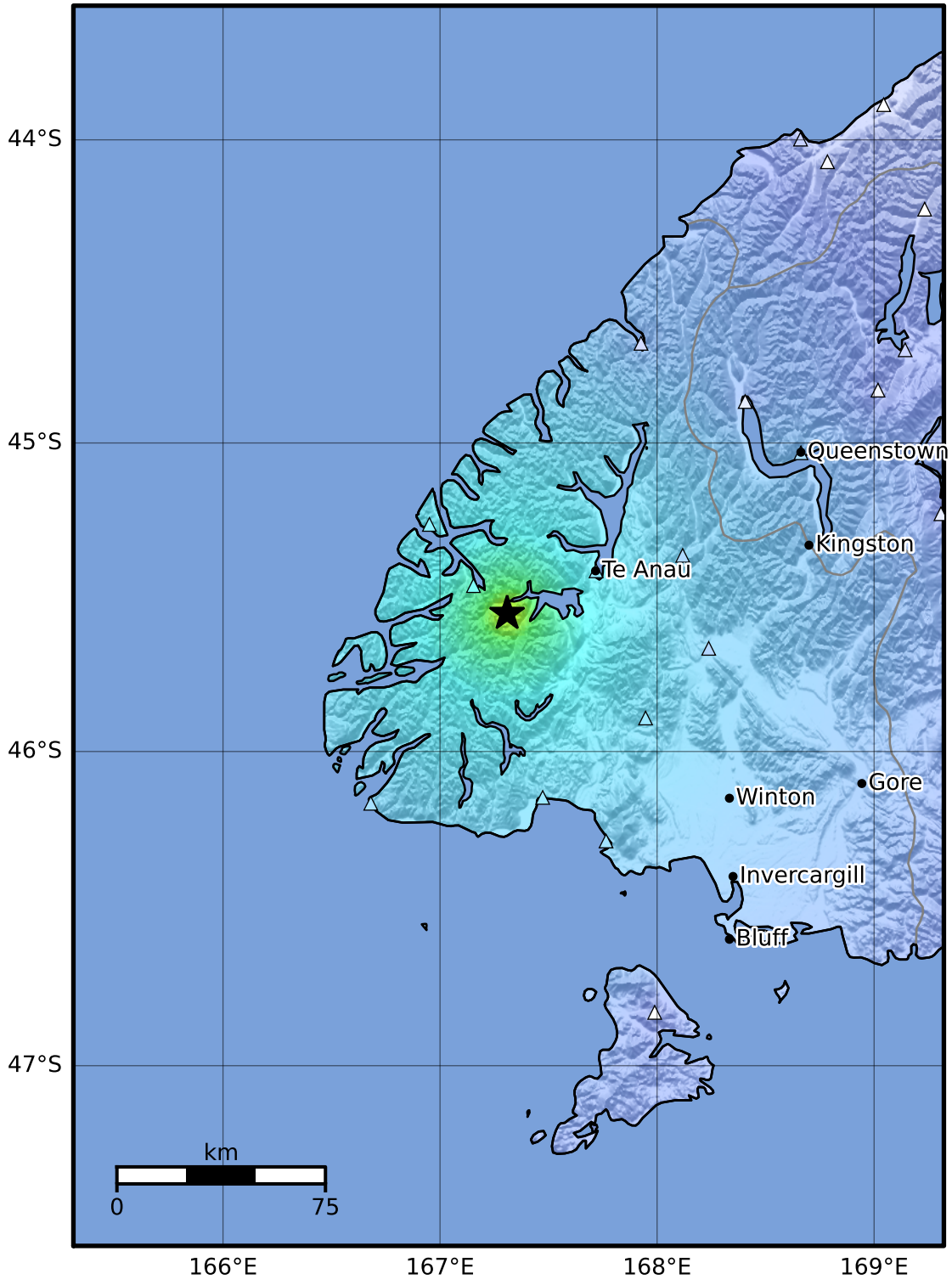


Macroseismic Intensity Map GNS Science

ShakeMap: Fiordland

Aug 04, 2022 09:16:55 UTC M4.6 S45.55 E167.31 Depth: 8.3km ID:2022p582126



SHAKING	Not felt	Weak	Light	Moderate	Strong	Very strong	Severe	Violent	Extreme
DAMAGE	None	None	None	Very light	Light	Moderate	Moderate/heavy	Heavy	Very heavy
PGA(%g)	<0.0464	0.29	1.63	5.16	12.5	22.4	40.2	72.2	>129
PGV(cm/s)	<0.0215	0.125	1.04	4.31	14.5	26.4	48.3	88.4	>162
INTENSITY	<b>I</b>	<b>II-III</b>	<b>IV</b>	<b>V</b>	<b>VI</b>	<b>VII</b>	<b>VIII</b>	<b>IX</b>	<b>X+</b>

Scale based on Moratalla et al.(2021) and Worden et al.(2012) Version 11: Processed 2022-08-10T22:44:38Z

△ Seismic Instrument ○ Reported Intensity ★ Epicenter

