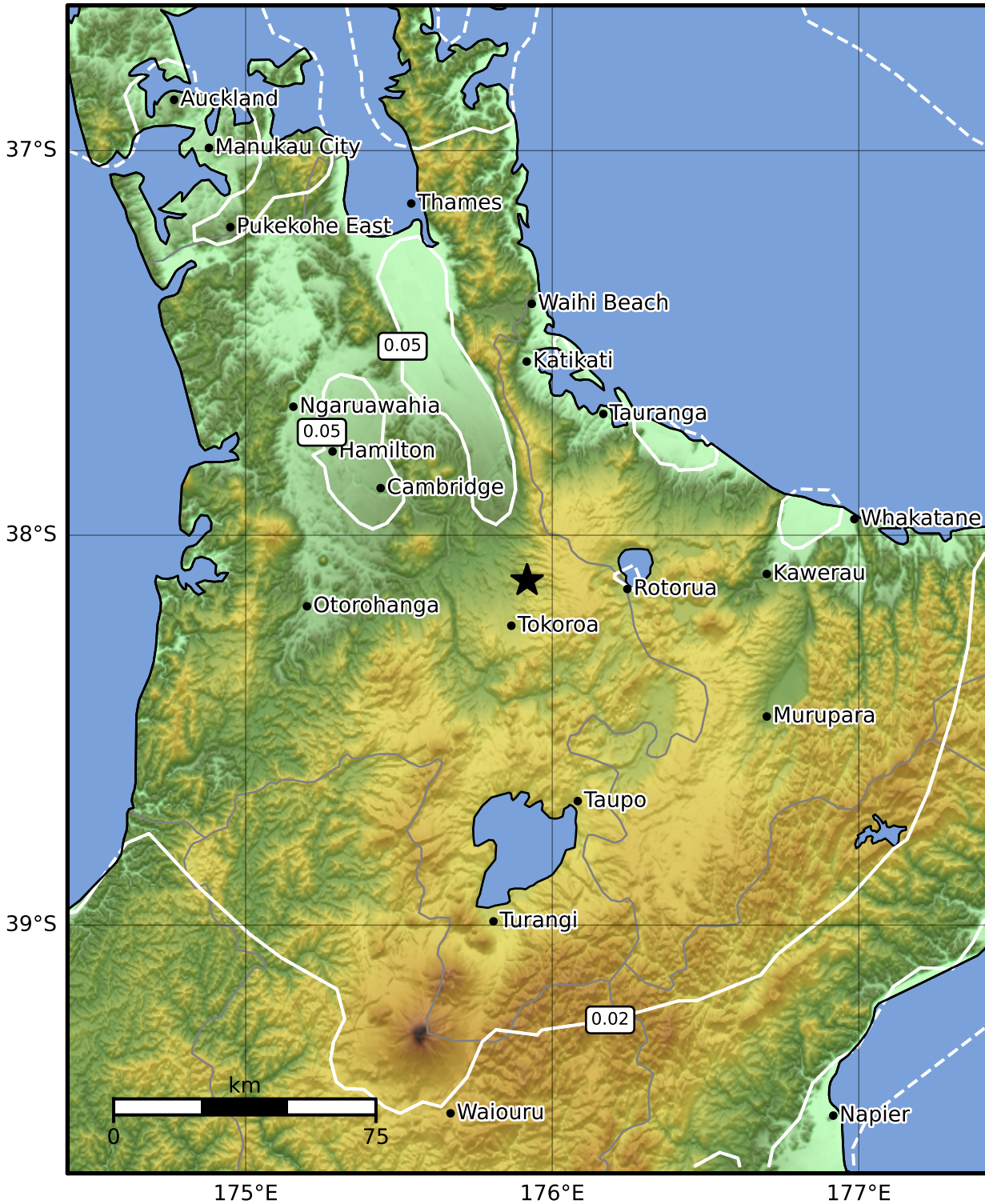


0.3 Second Peak Spectral Acceleration Map GNS Science

ShakeMap: Waikato

Oct 20, 2022 23:45:48 UTC M3.4 S38.12 E175.92 Depth: 177.9km ID:2022p791864



SA(0.3) (%g)	0.1	0.2	0.5	1	2	5	10	20	50	100	200
---------------------	------------	------------	------------	----------	----------	----------	-----------	-----------	-----------	------------	------------

Scale based on Moratalla et al.(2021) and Worden et al.(2012) Version 5: Processed 2022-10-21T00:46:24Z

△ Seismic Instrument ○ Reported Intensity ★ Epicenter



Te Whakaahuatanga Tere o ngā Rū Whenua me ngā Parawhenua
R-CET Rapid Characterisation of Earthquakes and Tsunamis
 A GNS Science Led Research Programme