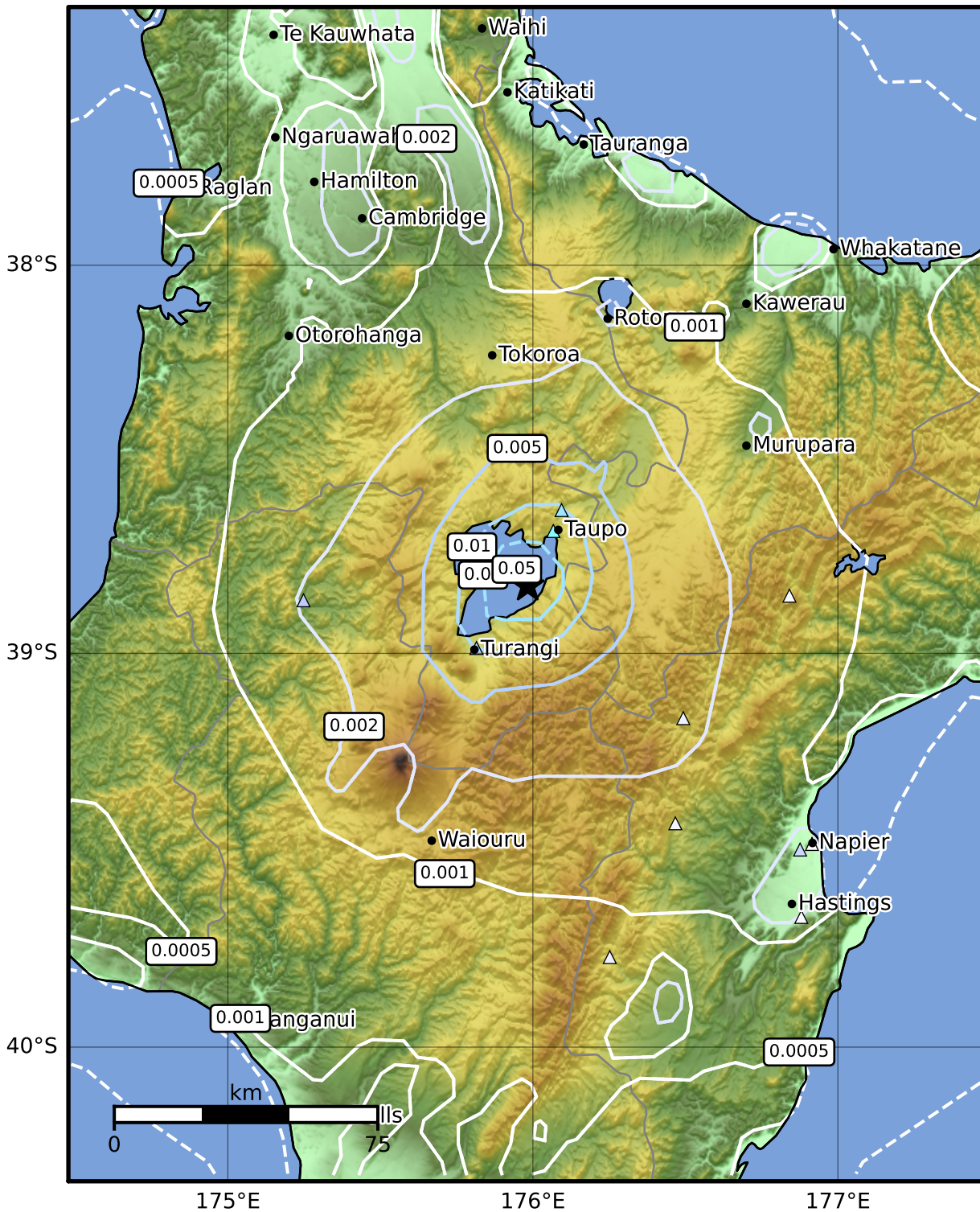


3.0 Second Peak Spectral Acceleration Map GNS Science

ShakeMap: Taupo

Nov 30, 2022 05:37:19 UTC M3.7 S38.83 E175.98 Depth: 3.0km ID:2022p900633



Scale based on Moratalla et al.(2021) and Worden et al.(2012) Version 12: Processed 2022-12-08T00:34:47Z

△ Seismic Instrument ○ Reported Intensity ★ Epicenter



Te Whakaahuatanga Tere o ngā Rū Whenua me ngā Parawhenua  
**R-CET** Rapid Characterisation of Earthquakes and Tsunamis  
 A GNS Science Led Research Programme