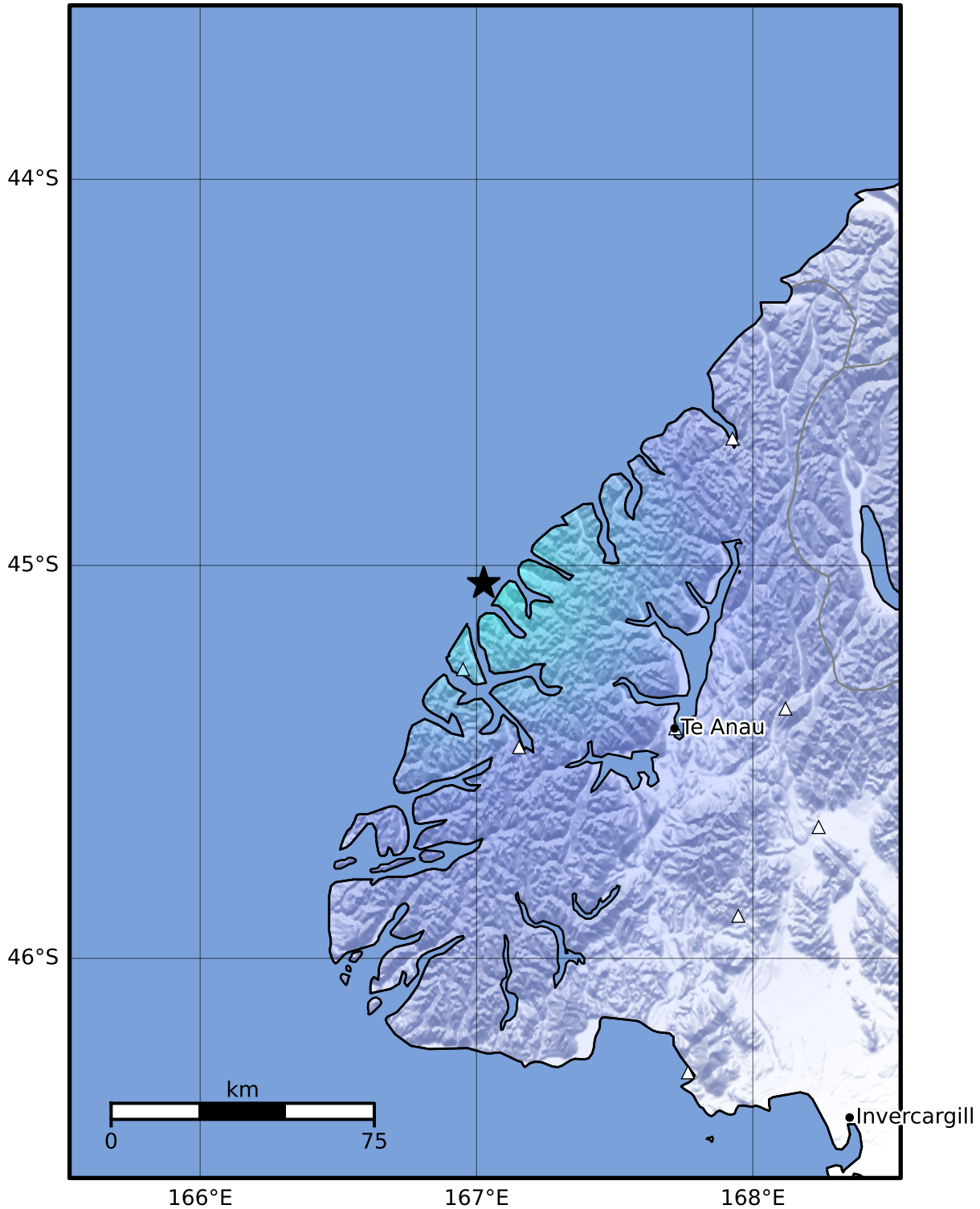


Macro seismic Intensity Map GNS Science

ShakeMap: Fiordland

Apr 19, 2023 14:13:36 UTC M3.6 S45.05 E167.03 Depth: 12.0km ID:2023p293493



| SHAKING | Not felt | Weak | Light | Moderate | Strong | Very strong | Severe | Violent | Extreme |
|-----------|----------|---------------|-----------|------------|-----------|-------------|----------------|-----------|------------|
| DAMAGE | None | None | None | Very light | Light | Moderate | Moderate/heavy | Heavy | Very heavy |
| PGA(%g) | <0.0464 | 0.29 | 1.63 | 5.16 | 12.5 | 22.4 | 40.2 | 72.2 | >129 |
| PGV(cm/s) | <0.0215 | 0.125 | 1.04 | 4.31 | 14.5 | 26.4 | 48.3 | 88.4 | >162 |
| INTENSITY | I | II-III | IV | V | VI | VII | VIII | IX | X+ |

Scale based on Moratalla et al.(2021) and Worden et al.(2012) Version 8: Processed 2023-04-19T17:14:22Z

△ Seismic Instrument ○ Reported Intensity

★ Epicenter