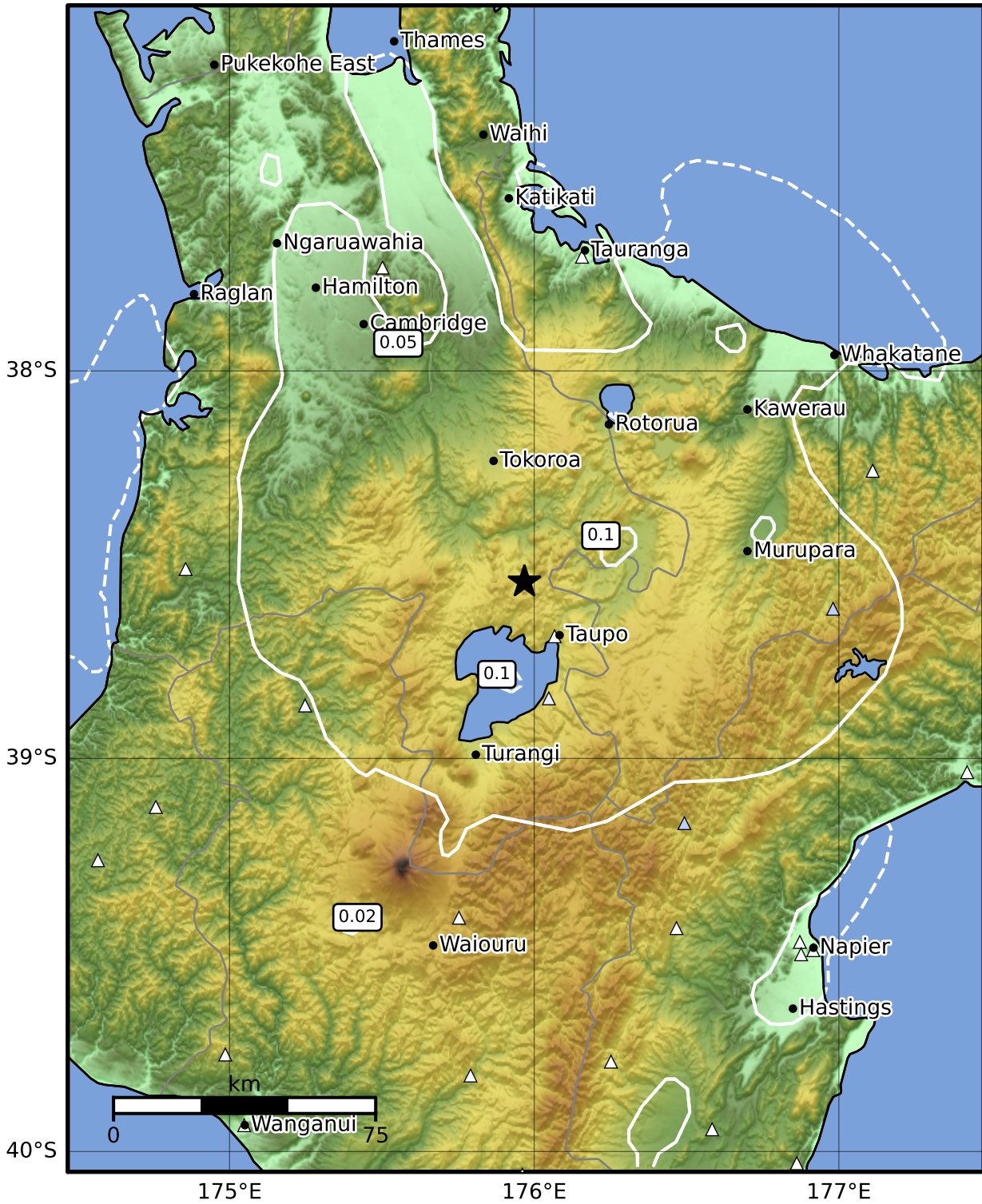


0.3 Second Peak Spectral Acceleration Map GNS Science

ShakeMap: Taupo

May 08, 2023 14:43:17 UTC M3.6 S38.55 E175.97 Depth: 131.3km ID:2023p344900



<b>SA(0.3) (%g)</b>	<b>0.1</b>	<b>0.2</b>	<b>0.5</b>	<b>1</b>	<b>2</b>	<b>5</b>	<b>10</b>	<b>20</b>	<b>50</b>	<b>100</b>	<b>200</b>
---------------------	------------	------------	------------	----------	----------	----------	-----------	-----------	-----------	------------	------------

Scale based on Moratalla et al.(2021) and Worden et al.(2012) Version 3: Processed 2023-05-08T14:58:24Z

△ Seismic Instrument ○ Reported Intensity ★ Epicenter



Te Whakaahuatanga Tere o ngā Rū Whenua me ngā Parawhenua  
**R-CET** Rapid Characterisation of Earthquakes and Tsunamis  
 A GNS Science Led Research Programme