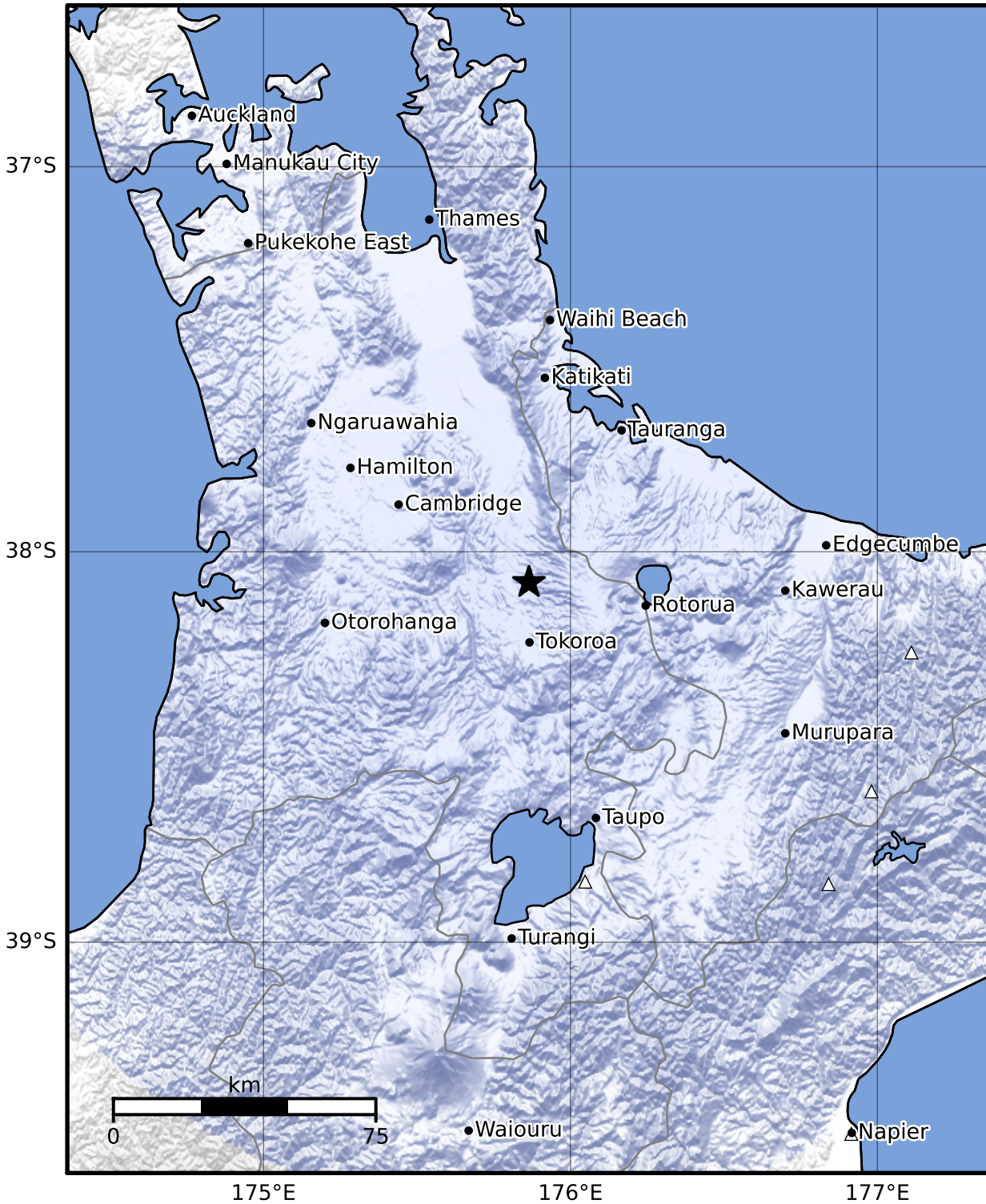


Macroseismic Intensity Map GNS Science
ShakeMap: Waikato

May 27, 2023 01:47:52 UTC M3.5 S38.08 E175.87 Depth: 177.2km ID:2023p394797



| SHAKING | Not felt | Weak | Light | Moderate | Strong | Very strong | Severe | Violent | Extreme |
|-----------|----------|--------|-------|------------|--------|-------------|----------------|---------|------------|
| DAMAGE | None | None | None | Very light | Light | Moderate | Moderate/heavy | Heavy | Very heavy |
| PGA(%g) | <0.0464 | 0.29 | 1.63 | 5.16 | 12.5 | 22.4 | 40.2 | 72.2 | >129 |
| PGV(cm/s) | <0.0215 | 0.125 | 1.04 | 4.31 | 14.5 | 26.4 | 48.3 | 88.4 | >162 |
| INTENSITY | I | II-III | IV | V | VI | VII | VIII | IX | X+ |

Scale based on Moratalla et al.(2021) and Worden et al.(2012) Version 12: Processed 2023-06-12T20:23:33Z
 Δ Seismic Instrument ○ Reported Intensity ★ Epicenter

