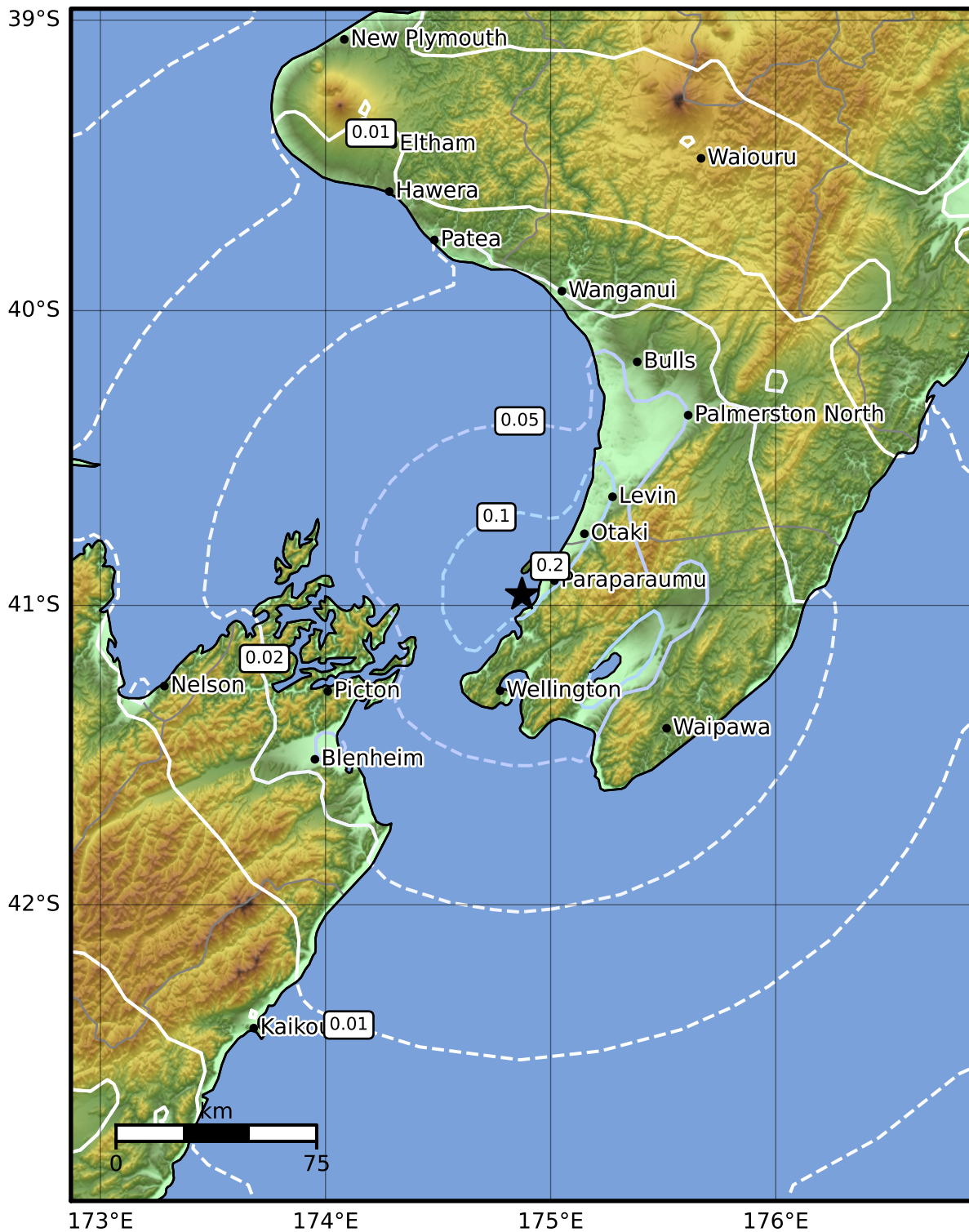


1.0 Second Peak Spectral Acceleration Map GNS Science

ShakeMap: Wellington

Jul 30, 2023 10:41:08 UTC M4.3 S40.96 E174.87 Depth: 44.3km ID:2023p568770



SA(1.0) (%g)	0.1	0.2	0.5	1	2	5	10	20	50	100	200
---------------------	------------	------------	------------	----------	----------	----------	-----------	-----------	-----------	------------	------------

Scale based on Moratalla et al.(2021) and Worden et al.(2012) Version 6: Processed 2023-07-30T11:12:39Z

△ Seismic Instrument ○ Reported Intensity ★ Epicenter



Te Whakaahuatanga Tere o ngā Rū Whenua me ngā Parawhenua
R-CET Rapid Characterisation of Earthquakes and Tsunamis
 A GNS Science Led Research Programme