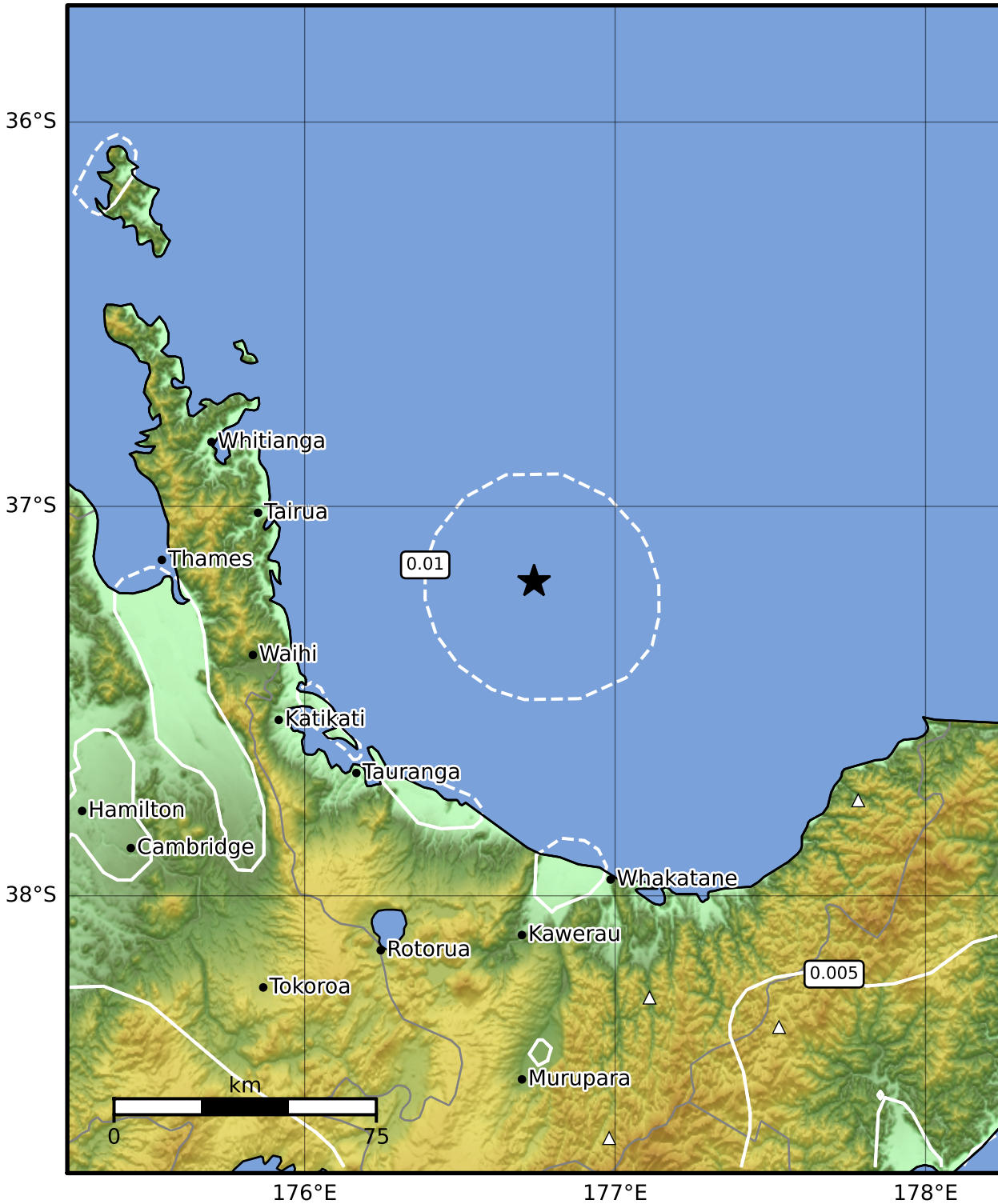


0.3 Second Peak Spectral Acceleration Map GNS Science

ShakeMap: Bay of Plenty

Aug 03, 2023 17:54:17 UTC M3.4 S37.19 E176.74 Depth: 329.0km ID:2023p580394



SA(0.3) (%g)	0.1	0.2	0.5	1	2	5	10	20	50	100	200
---------------------	------------	------------	------------	----------	----------	----------	-----------	-----------	-----------	------------	------------

Scale based on Moratalla et al.(2021) and Worden et al.(2012) Version 12: Processed 2023-08-16T03:41:46Z

△ Seismic Instrument ○ Reported Intensity ★ Epicenter



Te Whakaahuatanga Tere o ngā Rū Whenua me ngā Parawhenua
R-CET Rapid Characterisation of Earthquakes and Tsunamis
 A GNS Science Led Research Programme