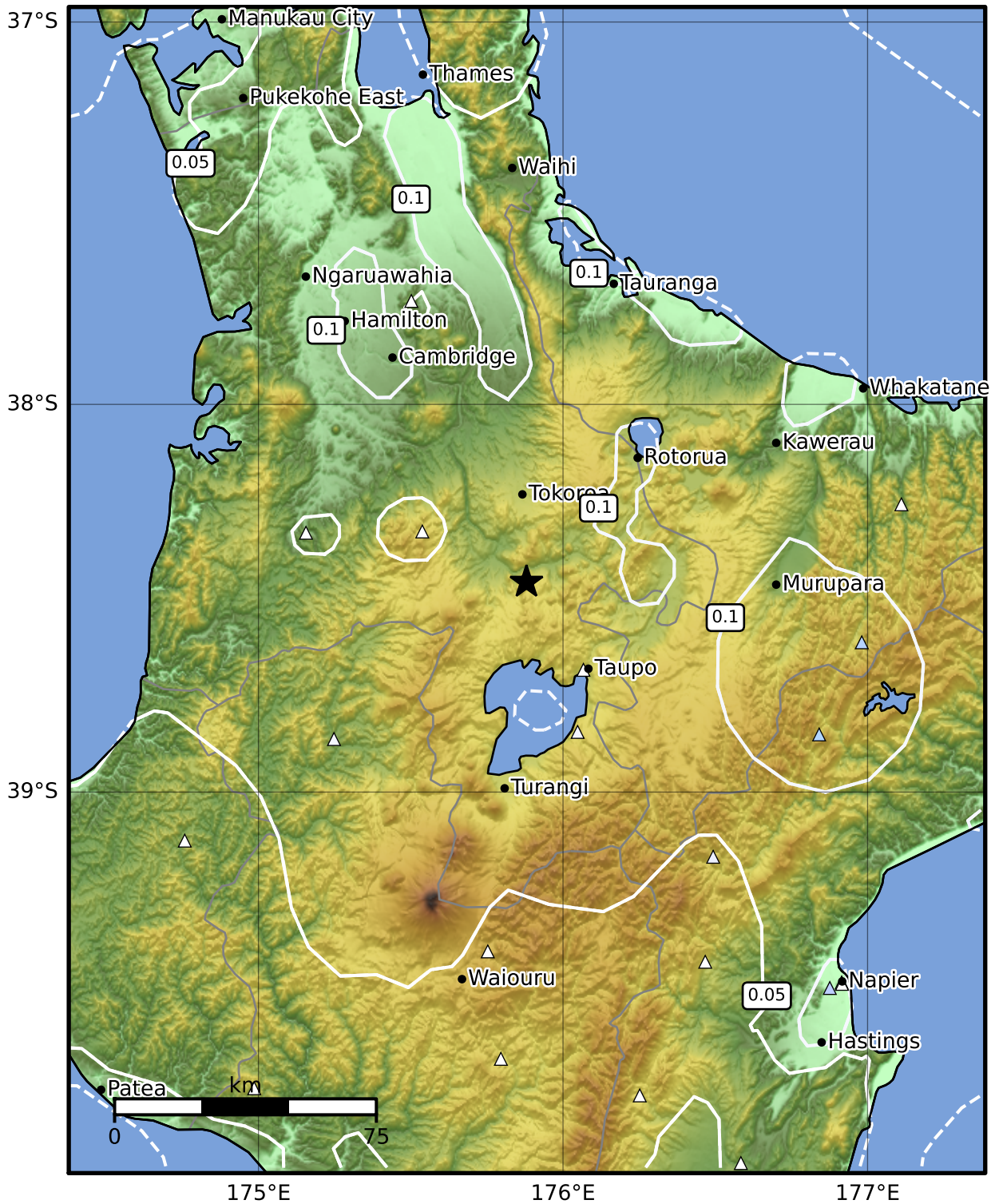


0.3 Second Peak Spectral Acceleration Map GNS Science

ShakeMap: Taupo

Oct 19, 2023 18:05:23 UTC M4.0 S38.46 E175.88 Depth: 152.2km ID:2023p788521



<b>SA(0.3) (%g)</b>	<b>0.1</b>	<b>0.2</b>	<b>0.5</b>	<b>1</b>	<b>2</b>	<b>5</b>	<b>10</b>	<b>20</b>	<b>50</b>	<b>100</b>	<b>200</b>
---------------------	------------	------------	------------	----------	----------	----------	-----------	-----------	-----------	------------	------------

Scale based on Moratalla et al.(2021) and Worden et al.(2012) Version 7: Processed 2023-10-19T18:50:32Z

△ Seismic Instrument ○ Reported Intensity ★ Epicenter



Te Whakaahuatanga Tere o ngā Rū Whenua me ngā Parawhenua  
**R-CET** Rapid Characterisation of Earthquakes and Tsunamis  
 A GNS Science Led Research Programme