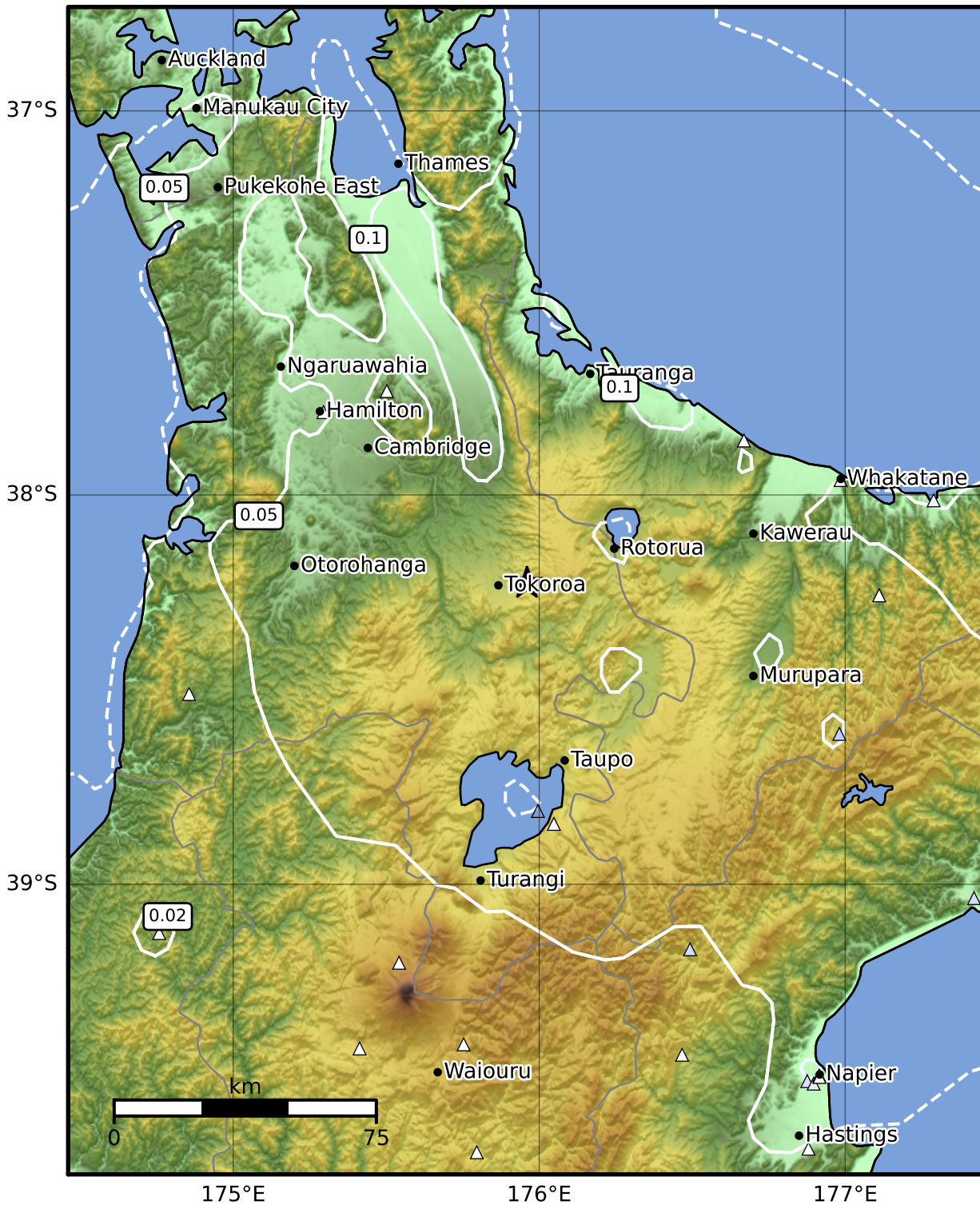


0.3 Second Peak Spectral Acceleration Map GNS Science

ShakeMap: Waikato

Jan 28, 2024 14:11:31 UTC M4.0 S38.23 E175.96 Depth: 168.1km ID:2024p074570



SA(0.3) (%g)	0.1	0.2	0.5	1	2	5	10	20	50	100	200
---------------------	------------	------------	------------	----------	----------	----------	-----------	-----------	-----------	------------	------------

Scale based on Moratalla et al.(2021) and Worden et al.(2012) Version 4: Processed 2024-01-28T14:35:31Z

△ Seismic Instrument ○ Reported Intensity ★ Epicenter



Te Whakaahuatanga Tere o ngā Rū Whenua me ngā Parawhenua
R-CET Rapid Characterisation of Earthquakes and Tsunamis
 A GNS Science Led Research Programme