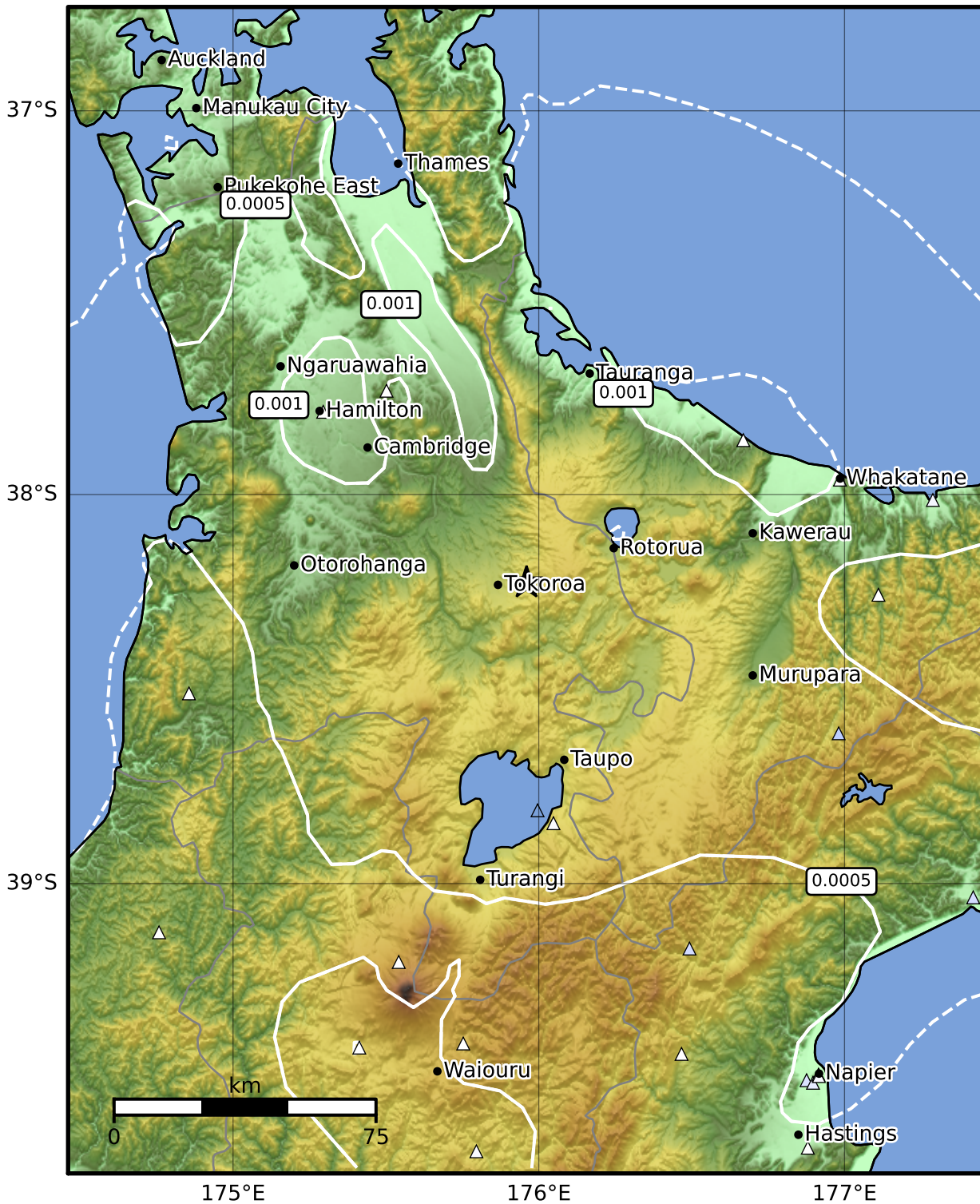


3.0 Second Peak Spectral Acceleration Map GNS Science

ShakeMap: Waikato

Jan 28, 2024 14:11:31 UTC M4.0 S38.23 E175.96 Depth: 168.1km ID:2024p074570



Scale based on Moratalla et al.(2021) and Worden et al.(2012) Version 4: Processed 2024-01-28T14:35:31Z

△ Seismic Instrument ○ Reported Intensity ★ Epicenter



Te Whakaahuatanga Tere o ngā Rū Whenua me ngā Parawhenua
R-CET
 Rapid Characterisation of Earthquakes and Tsunamis
 A GNS Science Led Research Programme