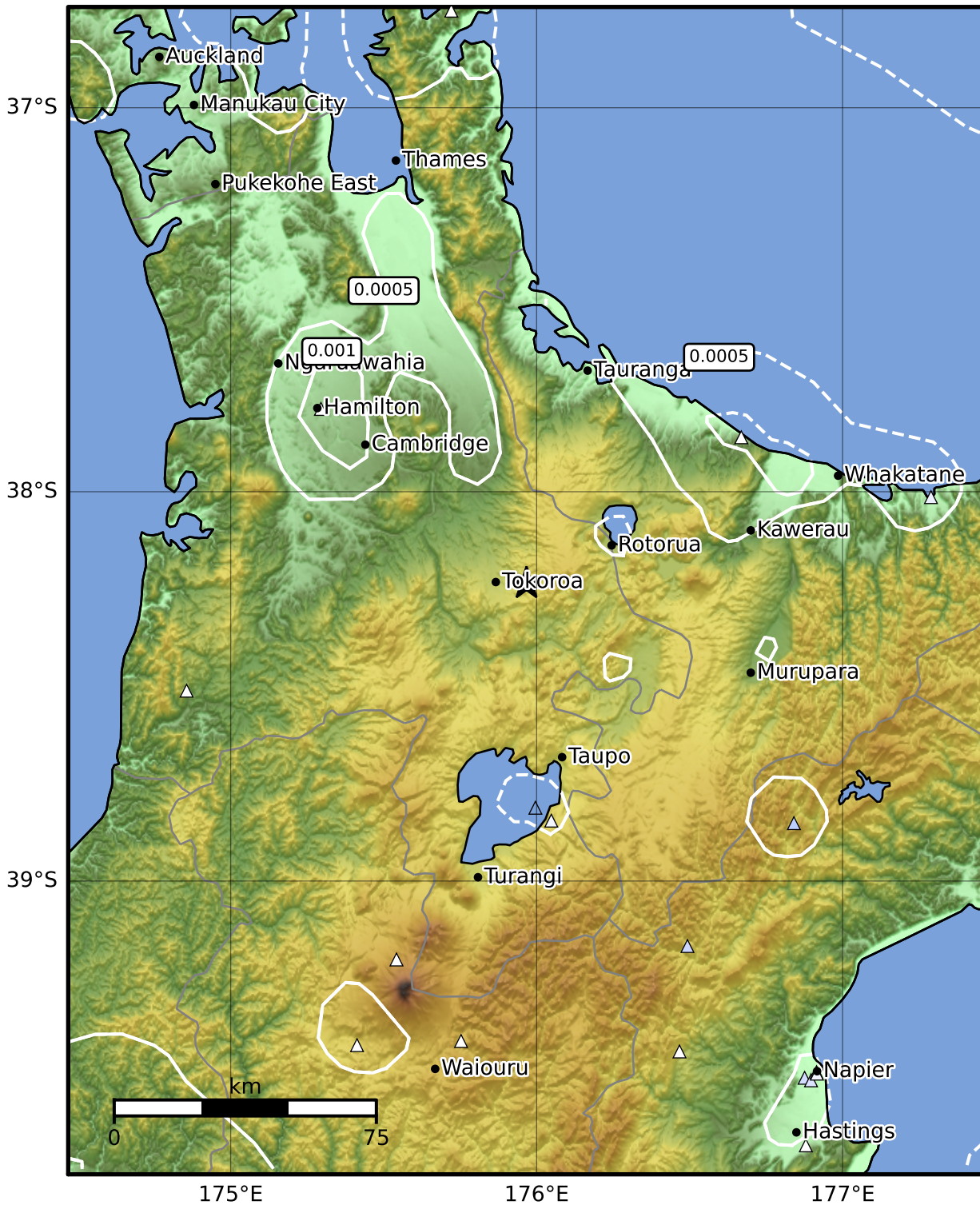


3.0 Second Peak Spectral Acceleration Map GNS Science

ShakeMap: Waikato

Jan 28, 2024 14:11:31 UTC M3.7 S38.24 E175.97 Depth: 166.3km ID:2024p074570



Scale based on Moratalla et al.(2021) and Worden et al.(2012) Version 14: Processed 2024-02-22T01:07:11Z

△ Seismic Instrument ○ Reported Intensity ★ Epicenter



Te Whakaahuatanga Tere o ngā Rū Whenua me ngā Parawhenua  
**R-CET** Rapid Characterisation of Earthquakes and Tsunamis  
 A GNS Science Led Research Programme