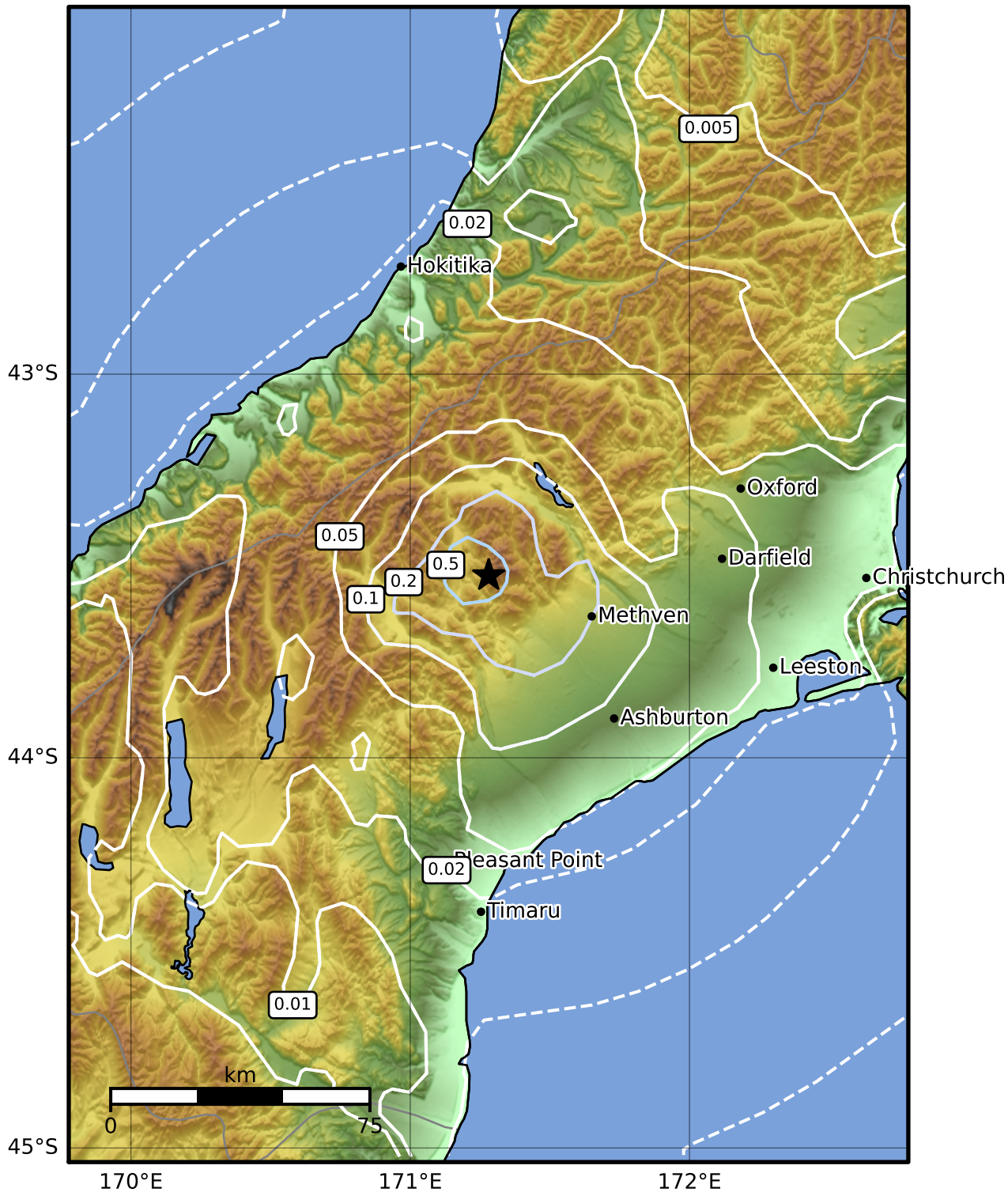


0.3 Second Peak Spectral Acceleration Map GNS Science

ShakeMap: Canterbury

Feb 27, 2024 09:53:01 UTC M3.4 S43.53 E171.28 Depth: 4.3km ID:2024p155167



SA(0.3) (%g)	0.1	0.2	0.5	1	2	5	10	20	50	100	200
---------------------	------------	------------	------------	----------	----------	----------	-----------	-----------	-----------	------------	------------

Scale based on Moratalla et al.(2021) and Worden et al.(2012) Version 1: Processed 2024-02-27T09:55:18Z

△ Seismic Instrument ○ Reported Intensity ★ Epicenter



Te Whakaahuatanga Tere o ngā Rū Whenua me ngā Parawhenua
R-CET Rapid Characterisation of Earthquakes and Tsunamis
 A GNS Science Led Research Programme