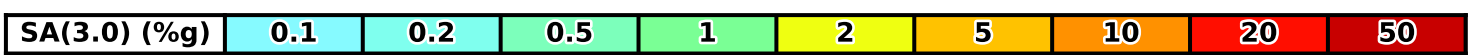
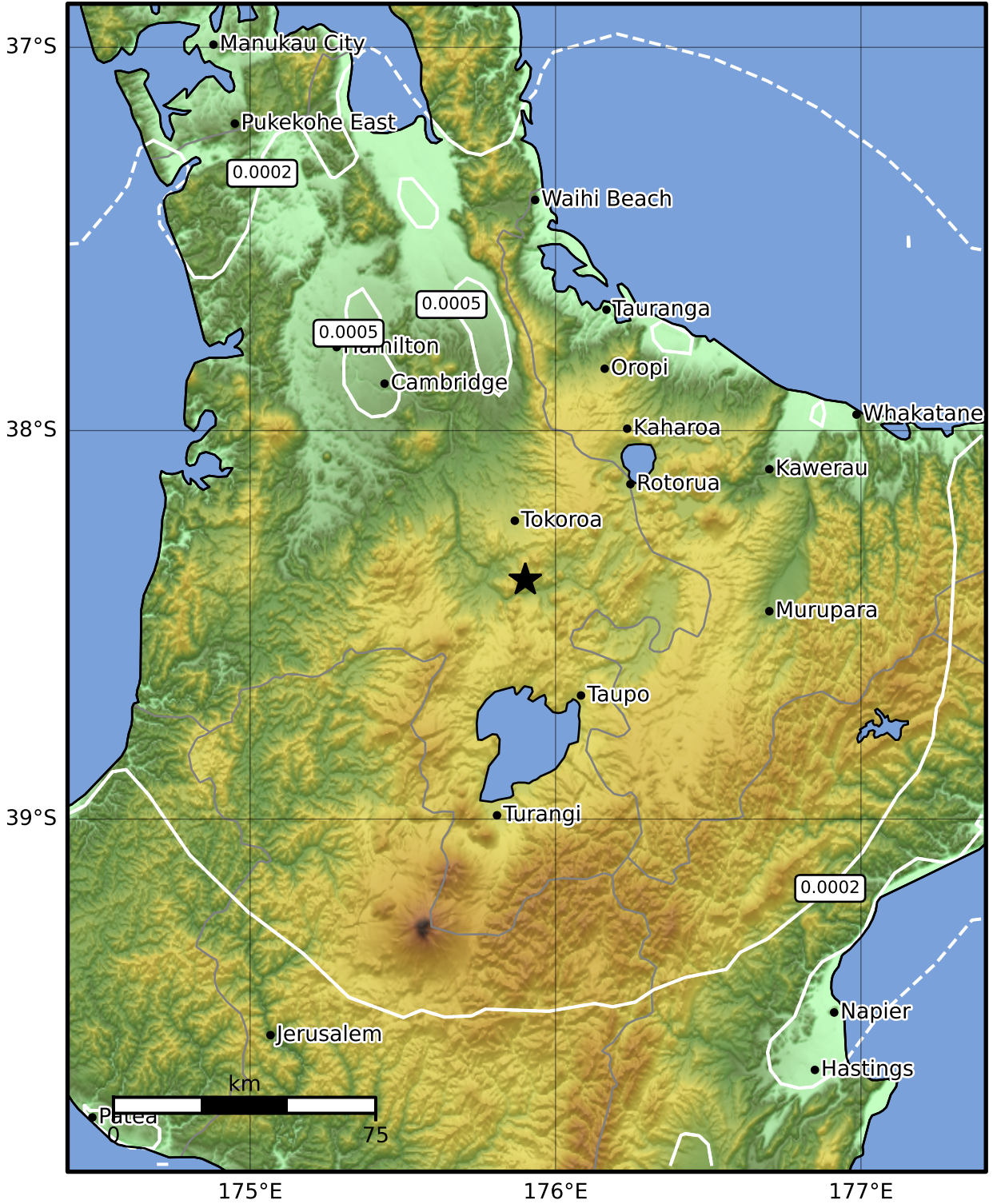


3.0 Second Peak Spectral Acceleration Map GNS Science
ShakeMap: Waikato

Apr 21, 2024 05:48:35 UTC M3.6 S38.39 E175.90 Depth: 144.0km ID:2024p300654



Scale based on Moratalla et al.(2021) and Worden et al.(2012) Version 1: Processed 2024-04-21T05:51:01Z
 Δ Seismic Instrument ○ Reported Intensity ★ Epicenter



Te Whakaahuatanga Tere o ngā Rū Whenua me ngā Parawhenua
R-CET Rapid Characterisation of Earthquakes and Tsunamis
 A GNS Science Led Research Programme