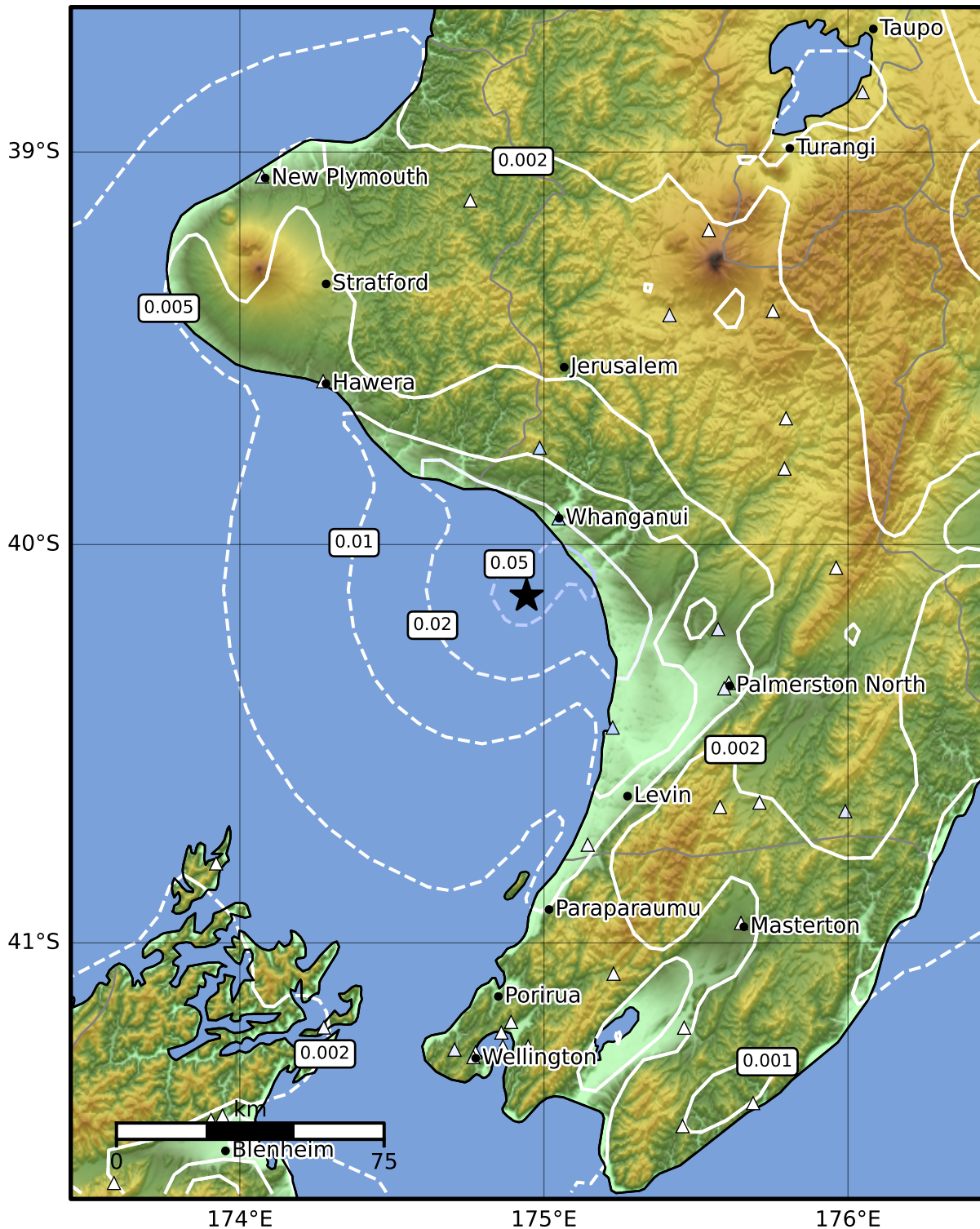


1.0 Second Peak Spectral Acceleration Map GNS Science  
ShakeMap: Whanganui

Aug 13, 2024 21:45:56 UTC M3.7 S40.13 E174.94 Depth: 12.0km ID:2024p610559



SA(1.0) (%g)	0.1	0.2	0.5	1	2	5	10	20	50	100	200
--------------	-----	-----	-----	---	---	---	----	----	----	-----	-----

Scale based on Moratalla et al.(2021) and Worden et al.(2012) Version 1: Processed 2024-08-13T21:54:57Z

△ Seismic Instrument ○ Reported Intensity ★ Epicenter



Te Whakaahuatanga Tere o ngā Rū Whenua me ngā Parawhenua  
**R-CET** Rapid Characterisation of Earthquakes and Tsunamis  
A GNS Science Led Research Programme