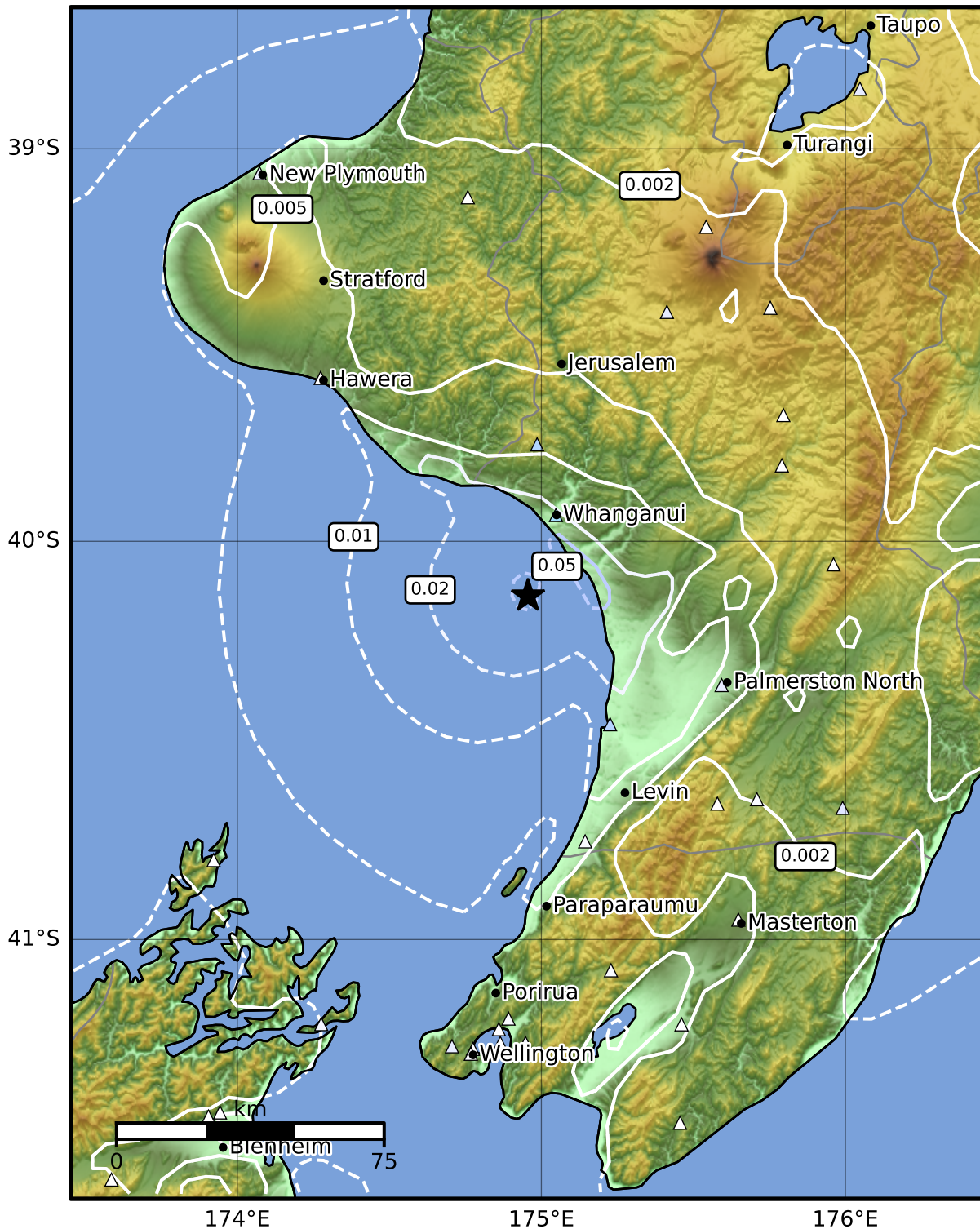


1.0 Second Peak Spectral Acceleration Map GNS Science
ShakeMap: Whanganui

Aug 13, 2024 21:45:55 UTC M3.7 S40.14 E174.96 Depth: 17.2km ID:2024p610559



SA(1.0) (%g)	0.1	0.2	0.5	1	2	5	10	20	50	100	200
---------------------	------------	------------	------------	----------	----------	----------	-----------	-----------	-----------	------------	------------

Scale based on Moratalla et al.(2021) and Worden et al.(2012) Version 9: Processed 2024-08-20T04:29:46Z

△ Seismic Instrument ○ Reported Intensity ★ Epicenter



Te Whakaahuatanga Tere o ngā Rū Whenua me ngā Parawhenua
R-CET Rapid Characterisation of Earthquakes and Tsunamis
A GNS Science Led Research Programme