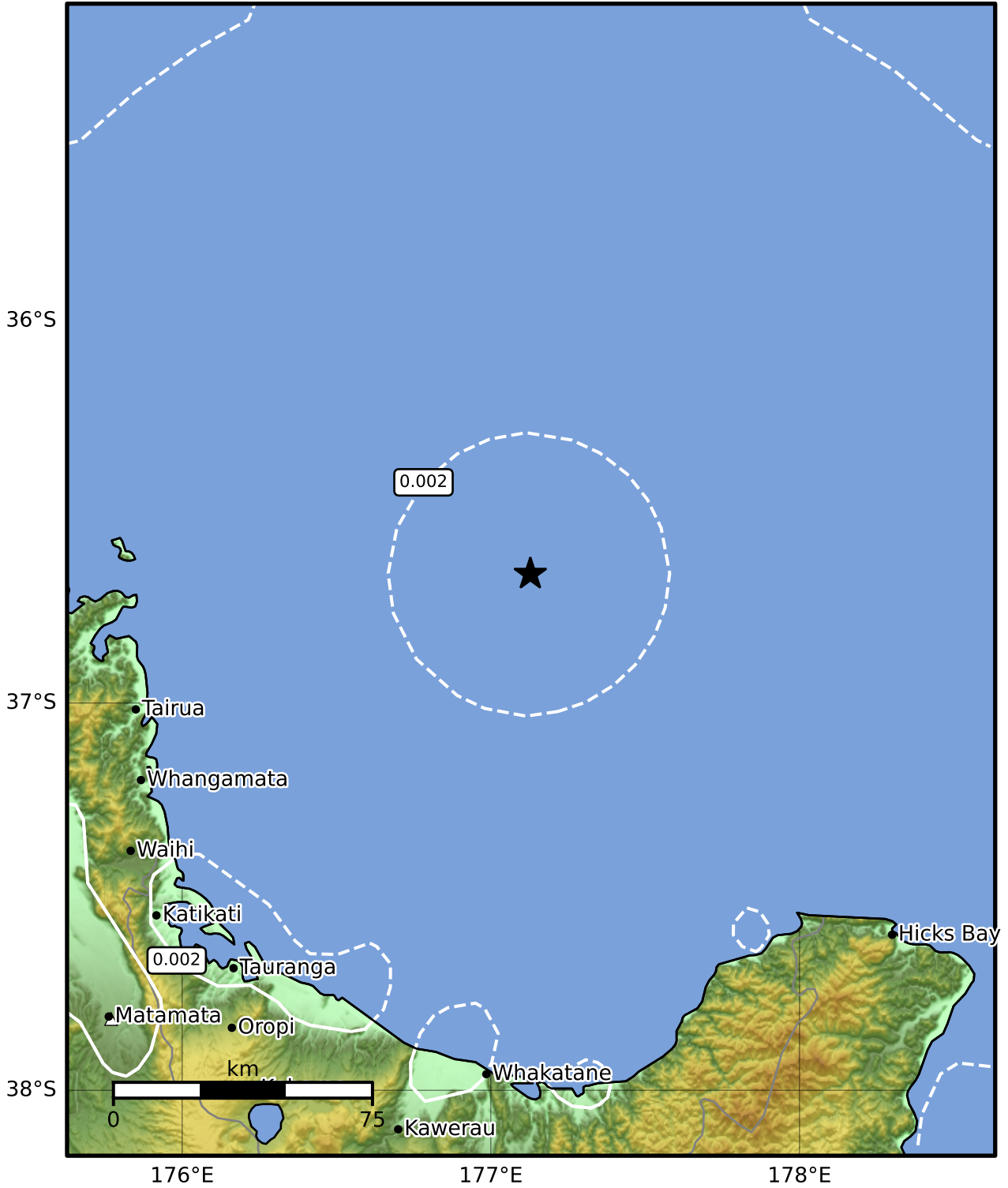


1.0 Second Peak Spectral Acceleration Map GNS Science

ShakeMap: Raukumara Plain

Nov 17, 2024 17:45:05 UTC M3.3 S36.66 E177.13 Depth: 220.8km ID:2024p869566



SA(1.0) (%g)	0.1	0.2	0.5	1	2	5	10	20	50	100	200
---------------------	------------	------------	------------	----------	----------	----------	-----------	-----------	-----------	------------	------------

Scale based on Moratalla et al.(2021) and Worden et al.(2012) Version 4: Processed 2024-11-17T18:46:33Z

△ Seismic Instrument ○ Reported Intensity ★ Epicenter



Te Whakaahuatanga Tere o ngā Rū Whenua me ngā Parawhenua
R-CET Rapid Characterisation of Earthquakes and Tsunamis
 A GNS Science Led Research Programme