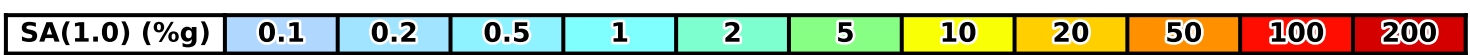
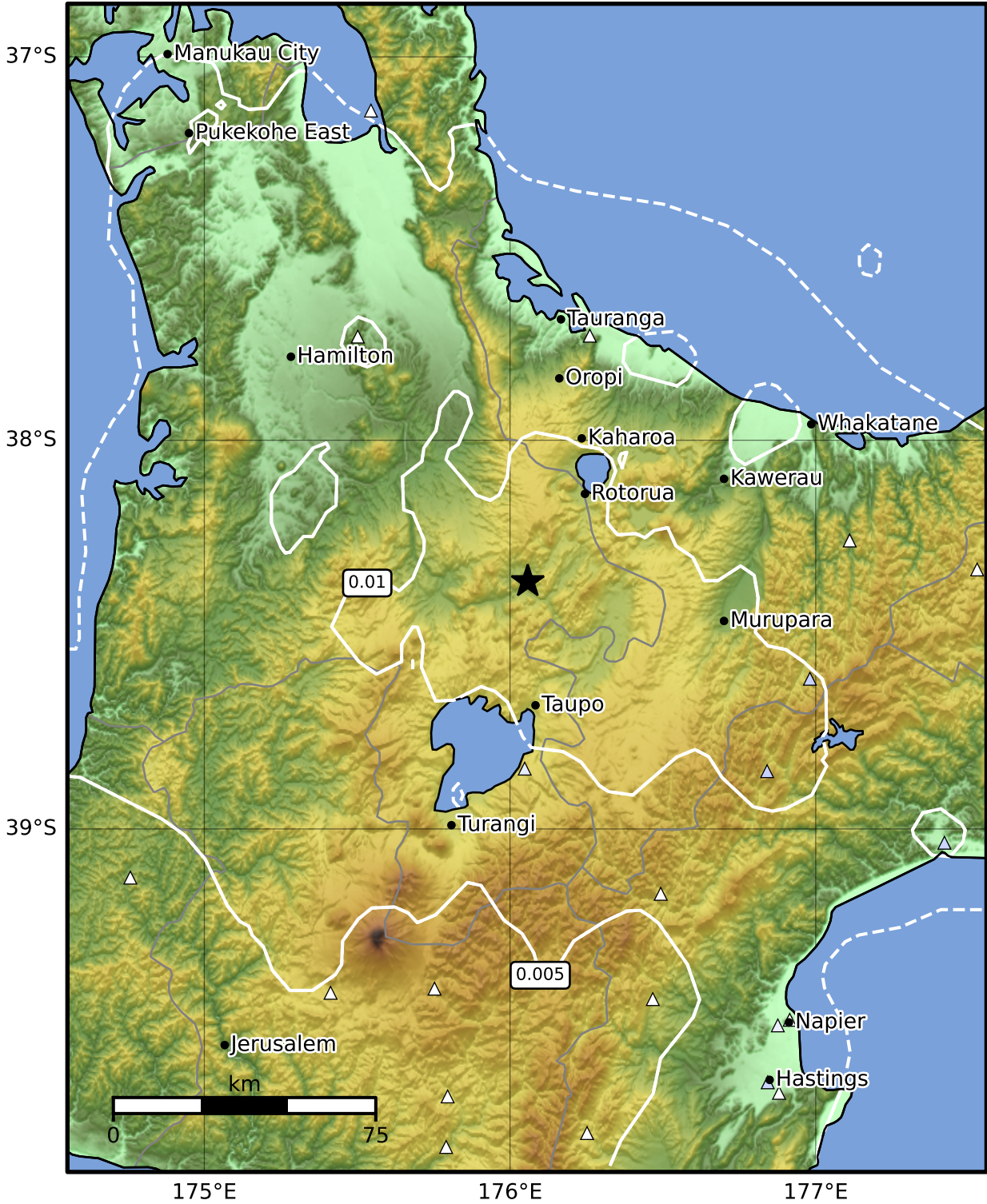


1.0 Second Peak Spectral Acceleration Map GNS Science
ShakeMap: Rotorua

Nov 21, 2024 11:08:20 UTC M3.5 S38.37 E176.06 Depth: 149.6km ID:2024p879632



Scale based on Moratalla et al.(2021) and Worden et al.(2012) Version 1: Processed 2024-11-21T11:12:50Z
 Δ Seismic Instrument ○ Reported Intensity ★ Epicenter