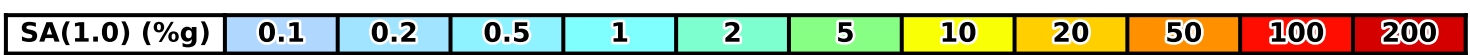
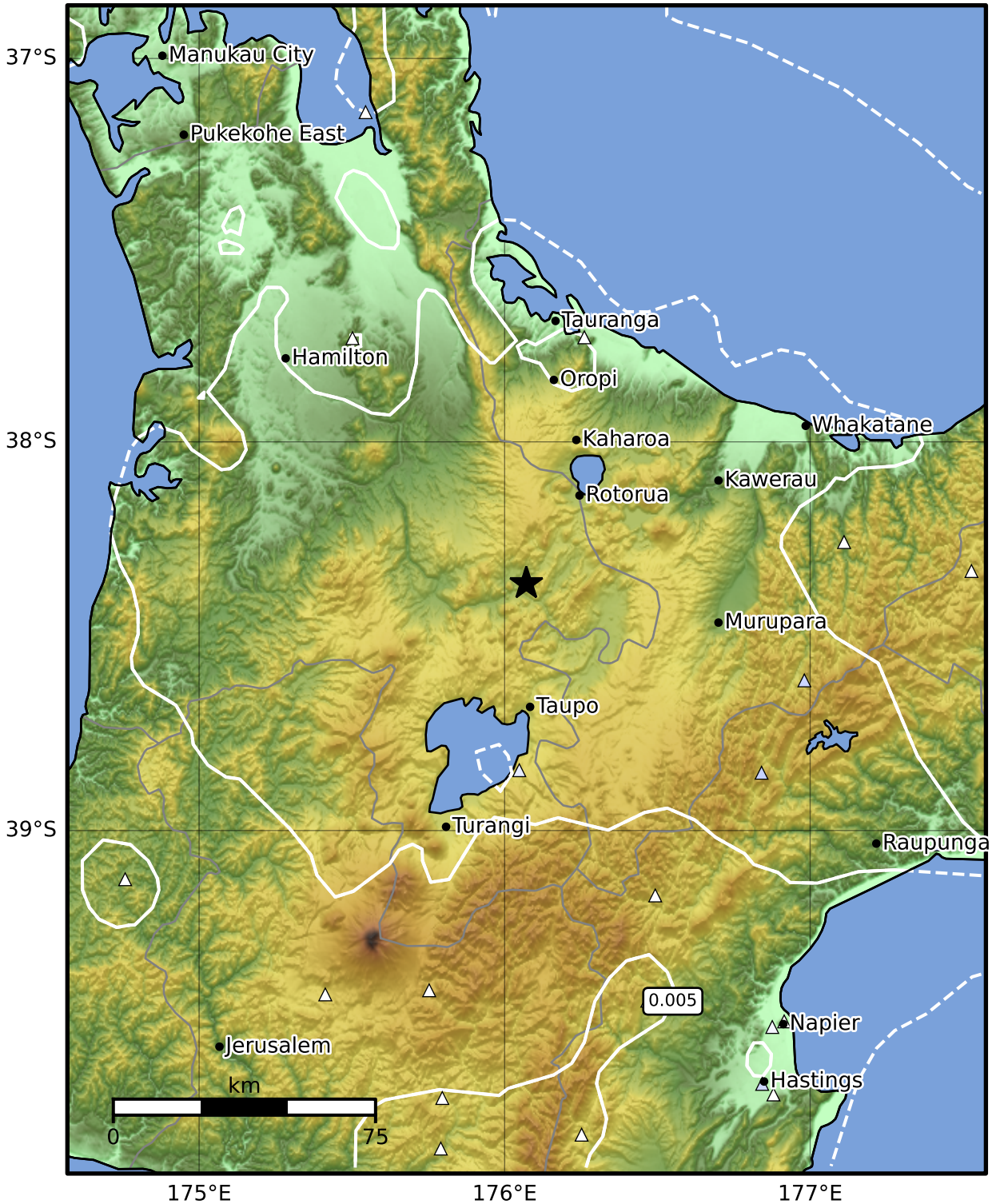


1.0 Second Peak Spectral Acceleration Map GNS Science  
ShakeMap: Rotorua

Nov 21, 2024 11:08:20 UTC M3.7 S38.37 E176.07 Depth: 148.2km ID:2024p879632



Scale based on Moratalla et al.(2021) and Worden et al.(2012) Version 2: Processed 2024-11-21T11:23:46Z  
 Δ Seismic Instrument ○ Reported Intensity ★ Epicenter



Te Whakaahuatanga Tere o ngā Rū Whenua me ngā Parawhenua  
**R-CET** Rapid Characterisation of Earthquakes and Tsunamis  
 A GNS Science Led Research Programme