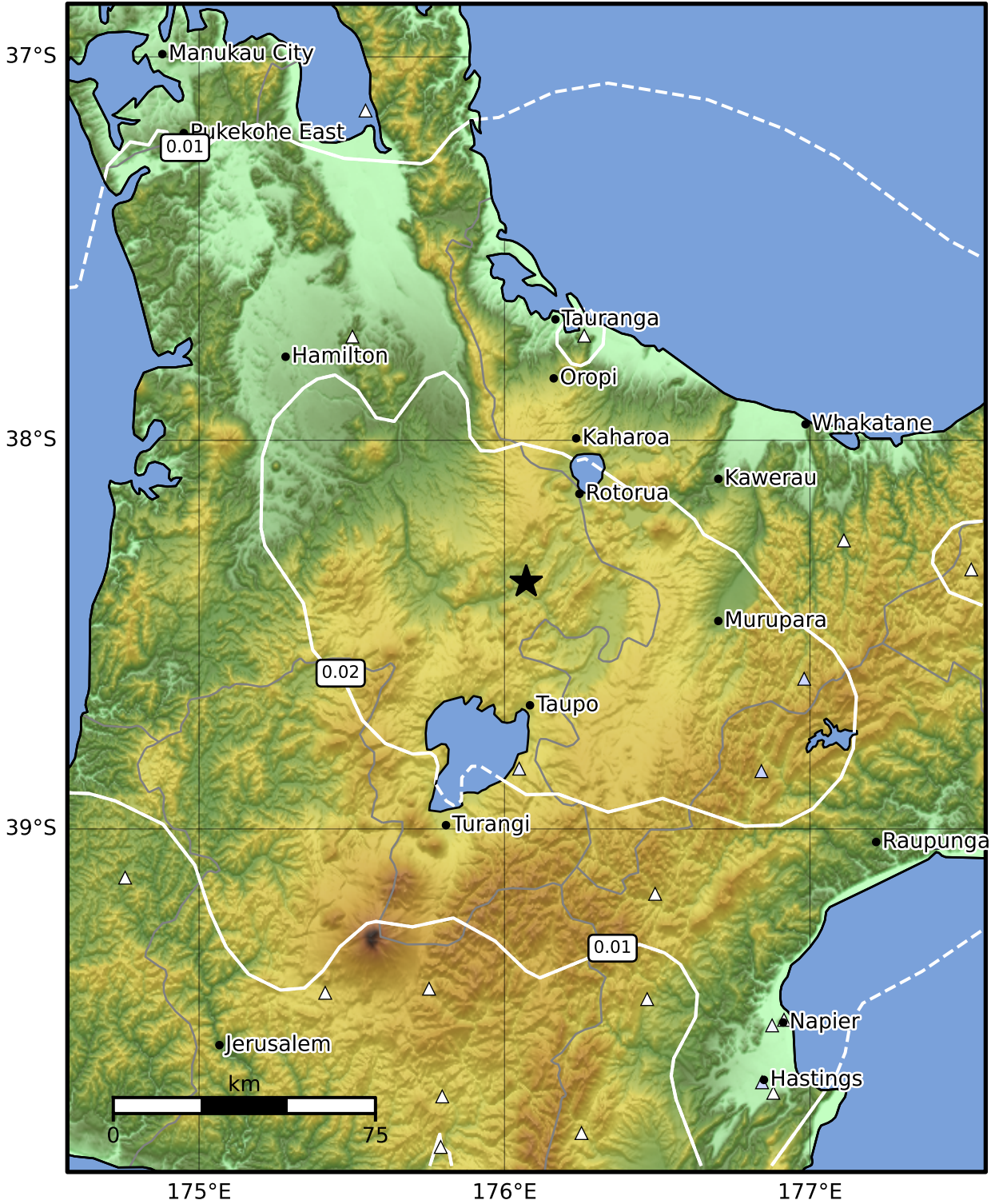


Peak Ground Velocity Map GNS Science  
ShakeMap: Rotorua

Nov 21, 2024 11:08:20 UTC M3.7 S38.37 E176.07 Depth: 148.2km ID:2024p879632



| PGV (cm/s) | 0.1 | 0.2 | 0.5 | 1 | 2 | 5 | 10 | 20 | 50 | 100 | 200 |
|------------|-----|-----|-----|---|---|---|----|----|----|-----|-----|
|------------|-----|-----|-----|---|---|---|----|----|----|-----|-----|

Scale based on Moratalla et al.(2021) and Worden et al.(2012) Version 4: Processed 2024-11-21T11:40:10Z

△ Seismic Instrument ○ Reported Intensity ★ Epicenter