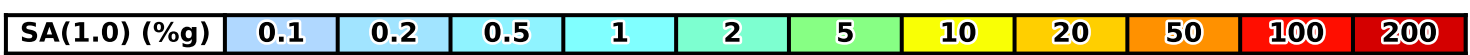
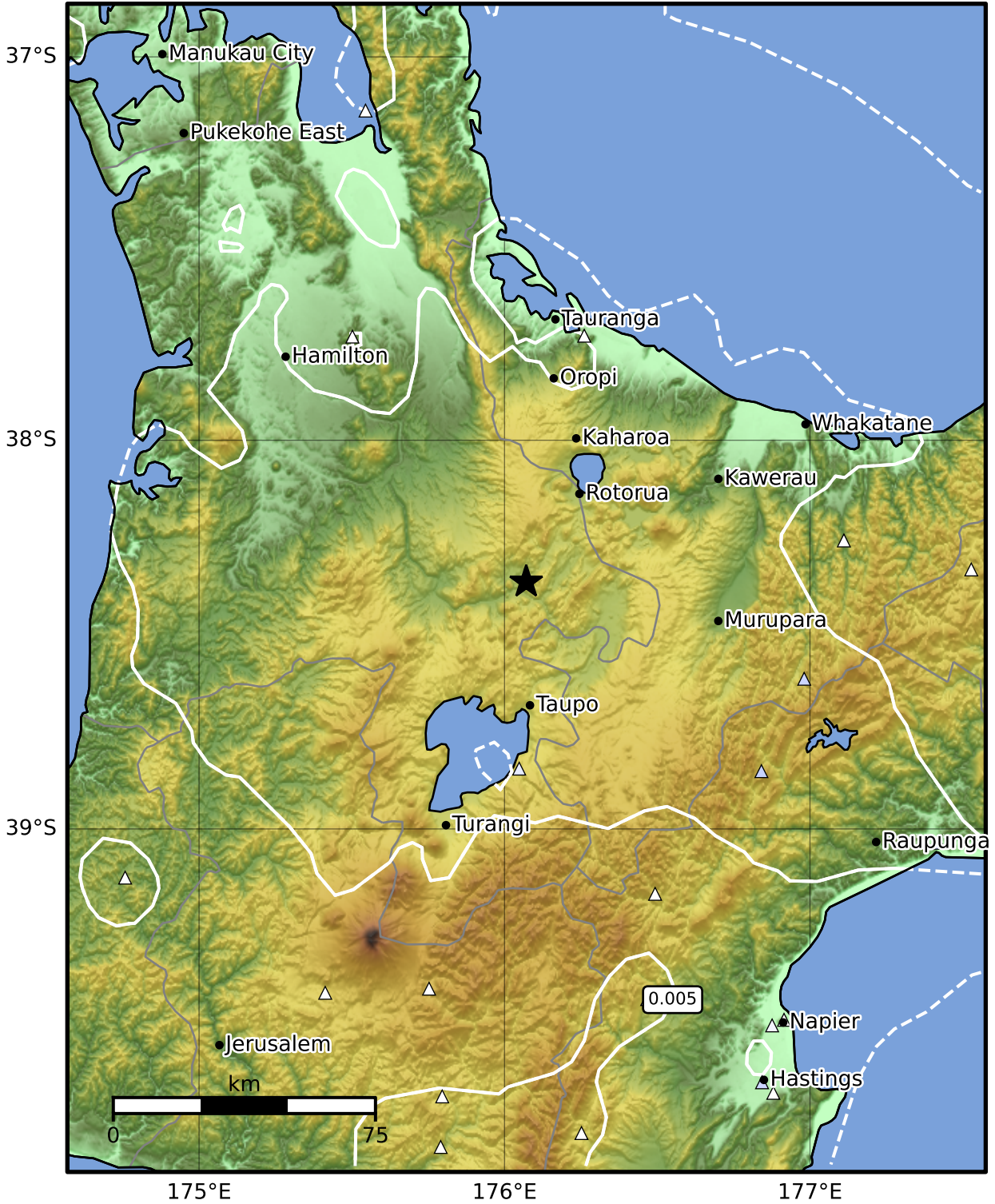


1.0 Second Peak Spectral Acceleration Map GNS Science
 ShakeMap: Rotorua

Nov 21, 2024 11:08:20 UTC M3.7 S38.37 E176.07 Depth: 148.2km ID:2024p879632



Scale based on Moratalla et al.(2021) and Worden et al.(2012) Version 6: Processed 2024-11-21T13:10:13Z

△ Seismic Instrument ○ Reported Intensity ★ Epicenter