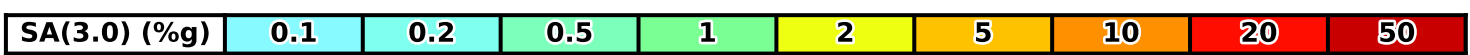
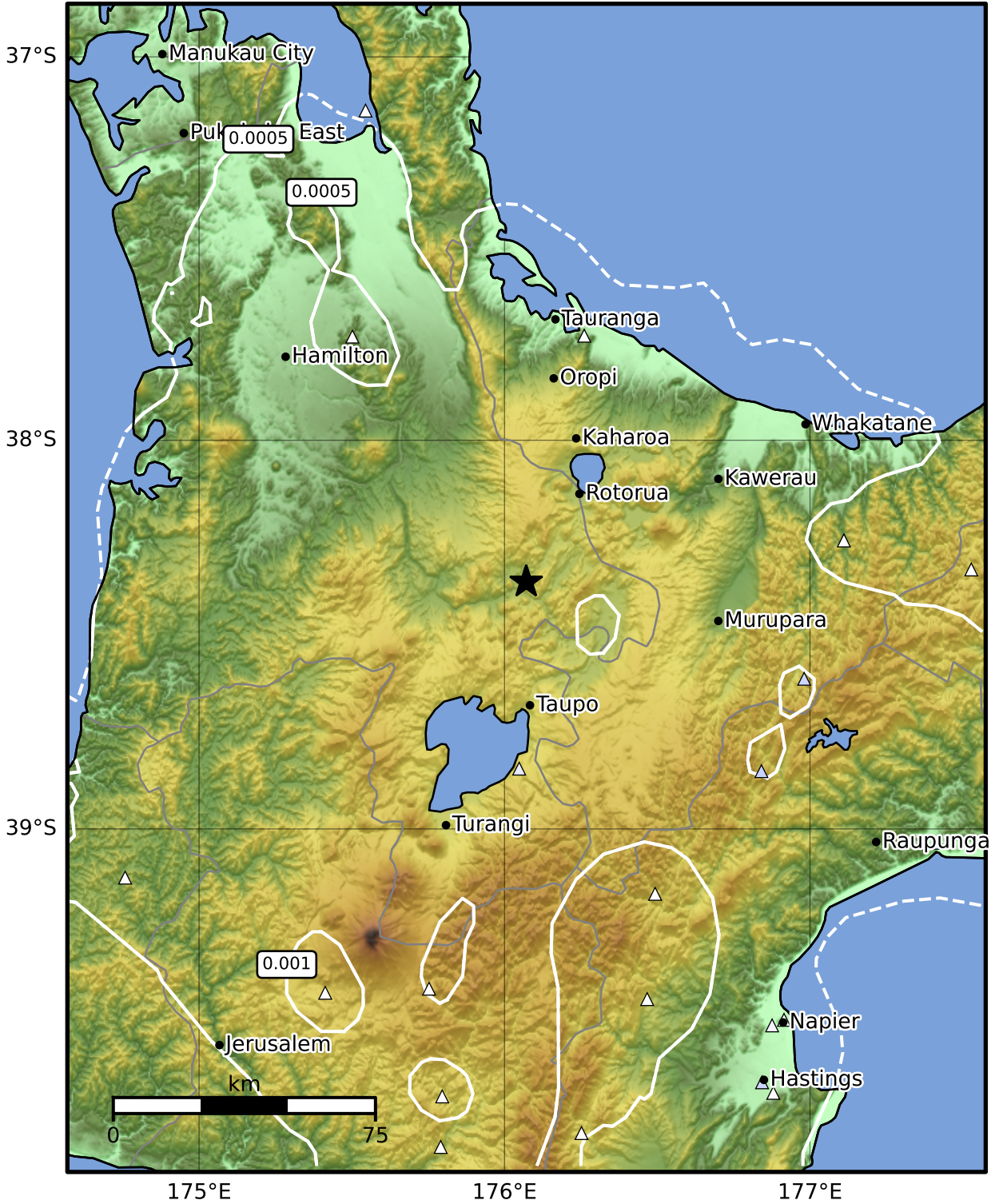


3.0 Second Peak Spectral Acceleration Map GNS Science
ShakeMap: Rotorua

Nov 21, 2024 11:08:20 UTC M3.7 S38.37 E176.07 Depth: 148.2km ID:2024p879632



Scale based on Moratalla et al.(2021) and Worden et al.(2012) Version 9: Processed 2024-11-22T11:11:02Z

△ Seismic Instrument ○ Reported Intensity ★ Epicenter



Te Whakaahuatanga Tere o ngā Rū Whenua me ngā Parawhenua
R-CET Rapid Characterisation of Earthquakes and Tsunamis
A GNS Science Led Research Programme