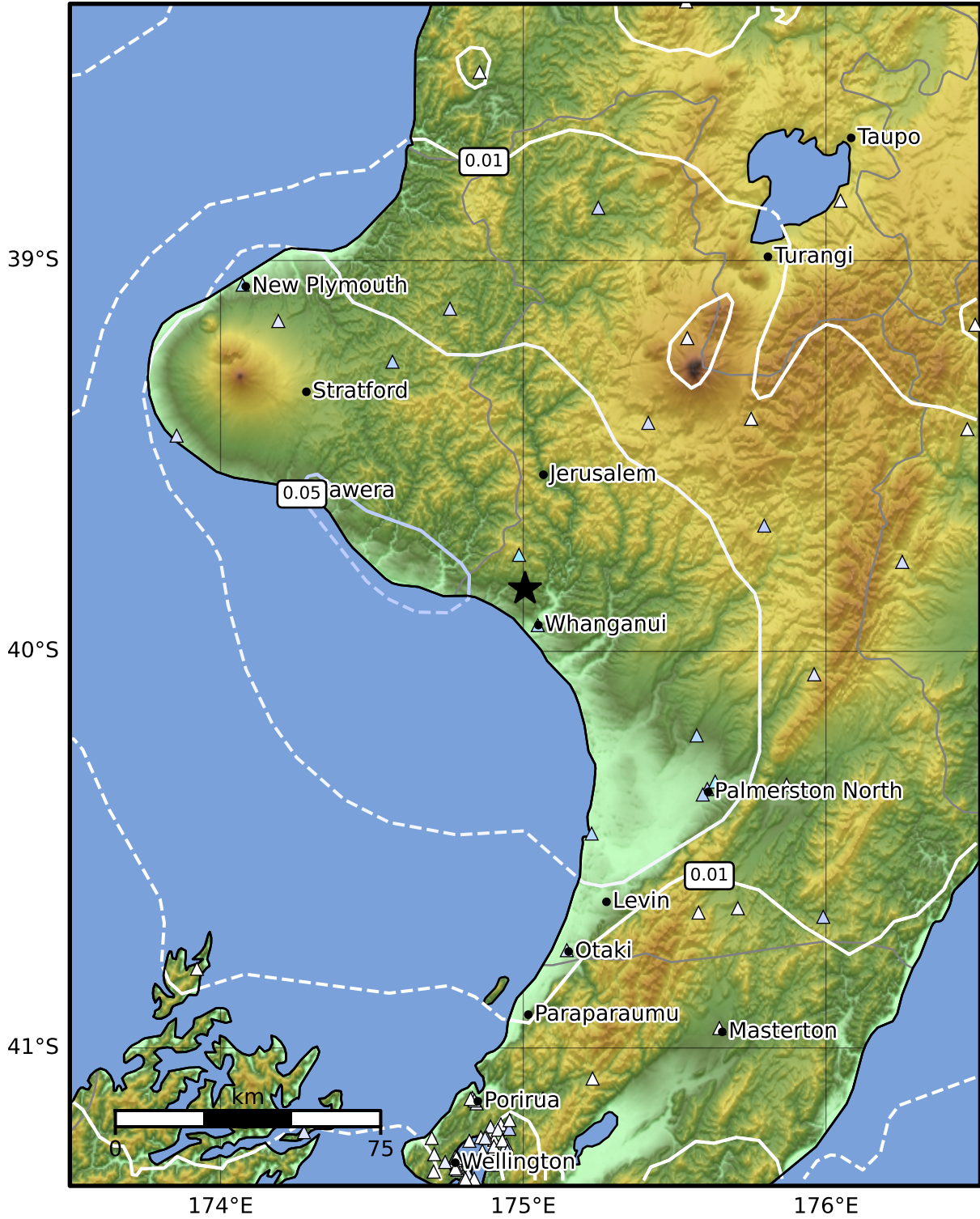


1.0 Second Peak Spectral Acceleration Map GNS Science  
ShakeMap: Whanganui

Feb 14, 2025 17:07:59 UTC M3.8 S39.84 E175.01 Depth: 66.9km ID:2025p120848



SA(1.0) (%g)	0.1	0.2	0.5	1	2	5	10	20	50	100	200
--------------	-----	-----	-----	---	---	---	----	----	----	-----	-----

Scale based on Moratalla et al.(2021) and Worden et al.(2012) Version 2: Processed 2025-02-14T17:20:39Z

△ Seismic Instrument ○ Reported Intensity ★ Epicenter



Te Whakaahuatanga Tere o ngā Rū Whenua me ngā Parawhenua  
**R-CET** Rapid Characterisation of Earthquakes and Tsunamis  
A GNS Science Led Research Programme