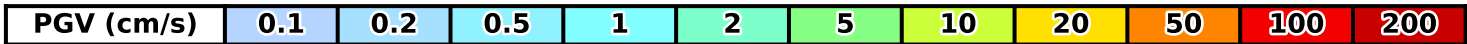
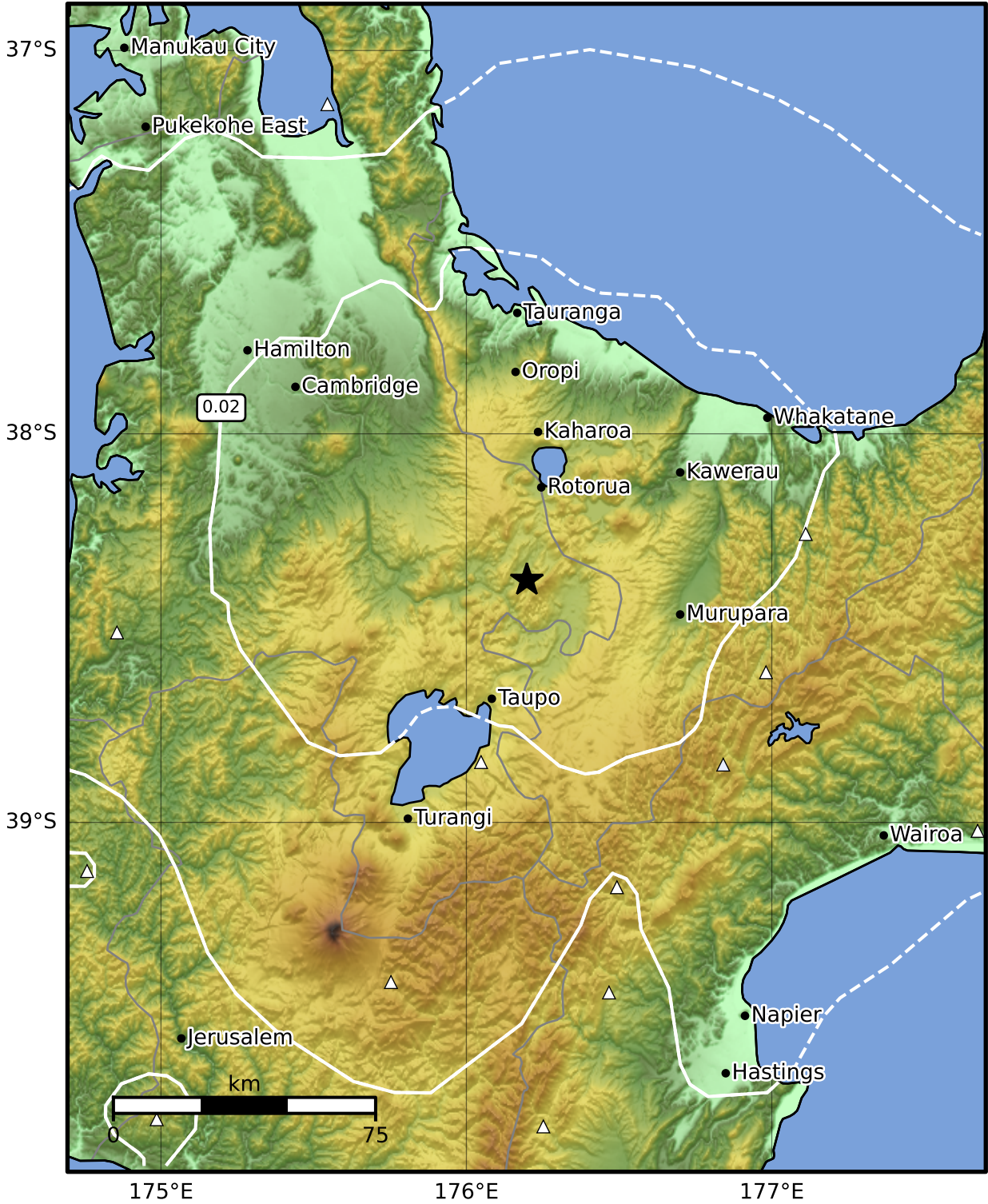


Peak Ground Velocity Map GNS Science
ShakeMap: Rotorua

Feb 15, 2025 18:53:35 UTC M3.4 S38.38 E176.20 Depth: 124.7km ID:2025p123748



Scale based on Moratalla et al.(2021) and Worden et al.(2012) Version 3: Processed 2025-02-15T19:25:28Z

△ Seismic Instrument ○ Reported Intensity ★ Epicenter