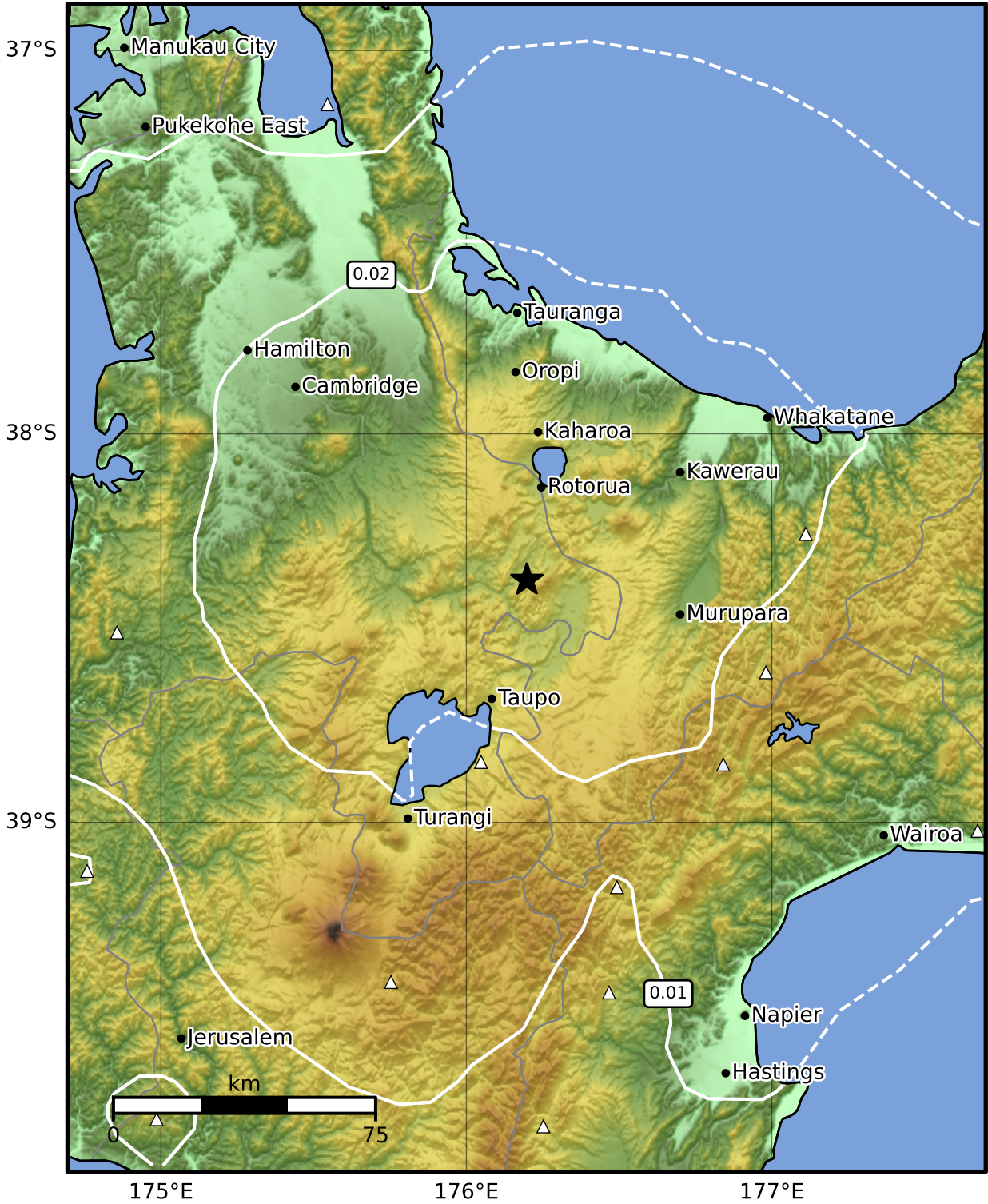


Peak Ground Velocity Map GNS Science
 ShakeMap: Rotorua

Feb 15, 2025 18:53:35 UTC M3.4 S38.38 E176.20 Depth: 124.7km ID:2025p123748



PGV (cm/s)	0.1	0.2	0.5	1	2	5	10	20	50	100	200
------------	-----	-----	-----	---	---	---	----	----	----	-----	-----

Scale based on Moratalla et al.(2021) and Worden et al.(2012) Version 4: Processed 2025-02-15T19:55:27Z

△ Seismic Instrument ○ Reported Intensity ★ Epicenter