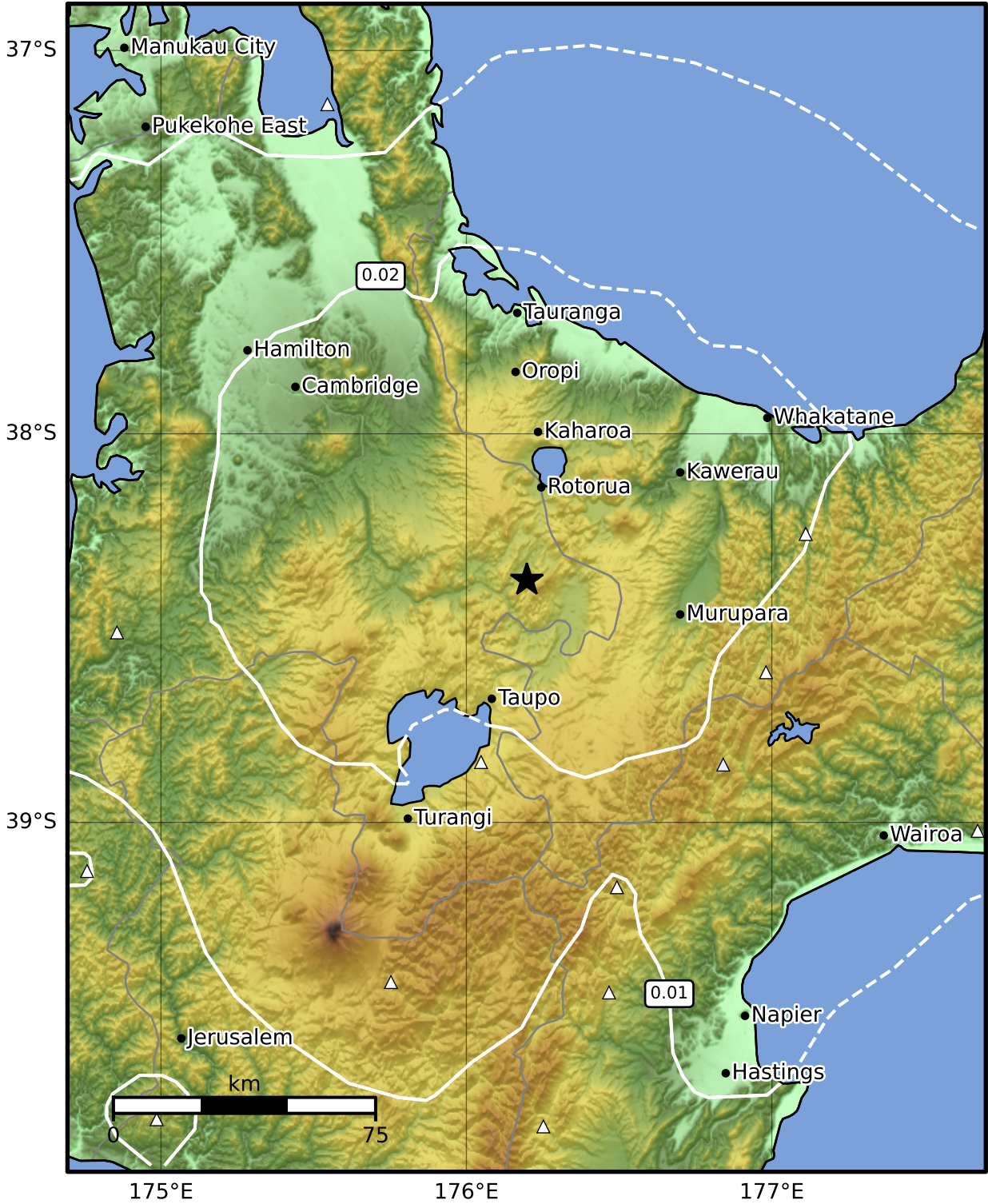


Peak Ground Velocity Map GNS Science
ShakeMap: Rotorua

Feb 15, 2025 18:53:35 UTC M3.4 S38.38 E176.20 Depth: 124.7km ID:2025p123748



PGV (cm/s) 0.1 0.2 0.5 1 2 5 10 20 50 100 200

Scale based on Moratalla et al.(2021) and Worden et al.(2012) Version 6: Processed 2025-02-15T21:55:25Z

△ Seismic Instrument ○ Reported Intensity ★ Epicenter