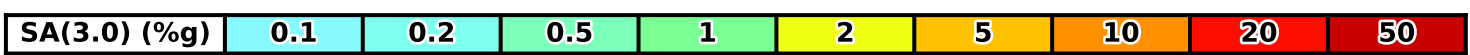
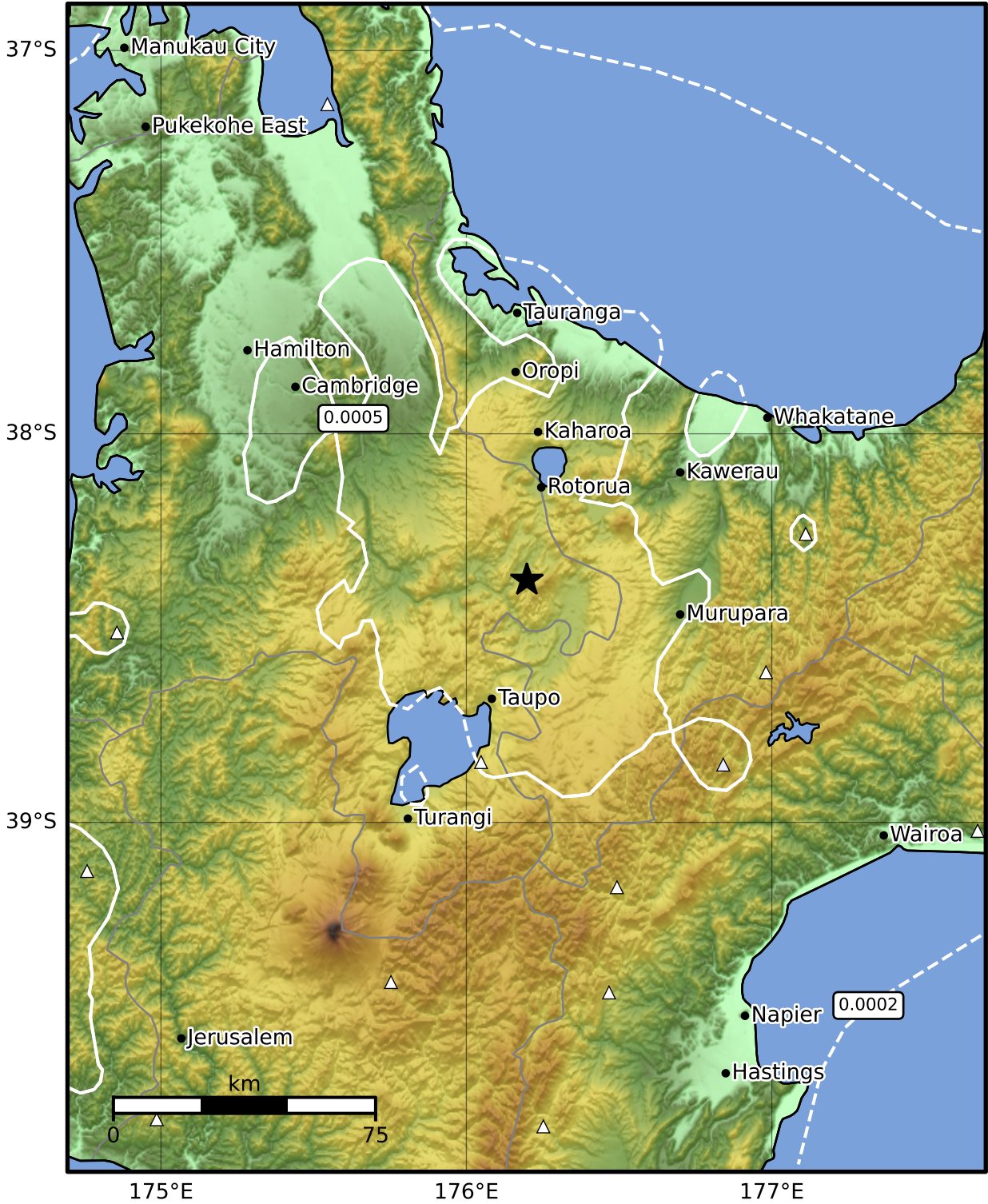


3.0 Second Peak Spectral Acceleration Map GNS Science

ShakeMap: Rotorua

Feb 15, 2025 18:53:35 UTC M3.4 S38.38 E176.20 Depth: 124.7km ID:2025p123748



Scale based on Moratalla et al.(2021) and Worden et al.(2012) Version 6: Processed 2025-02-15T21:55:25Z

△ Seismic Instrument ○ Reported Intensity ★ Epicenter



Te Whakaahuatanga Tere o ngā Rū Whenua me ngā Parawhenua
R-CET Rapid Characterisation of Earthquakes and Tsunamis
 A GNS Science Led Research Programme