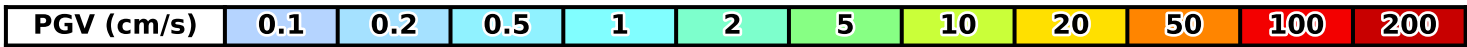
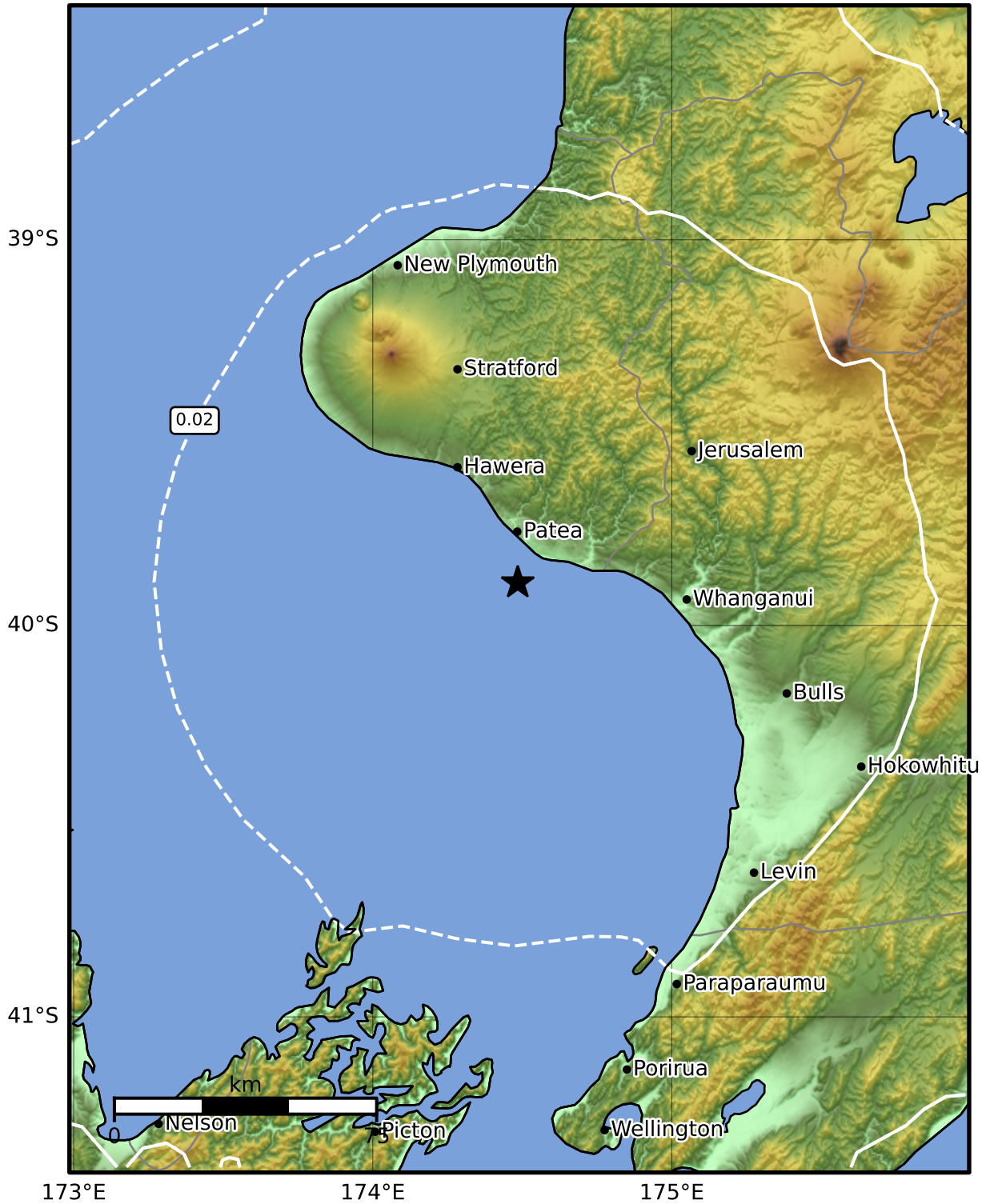


Peak Ground Velocity Map GNS Science  
ShakeMap: Whanganui

Mar 05, 2025 06:10:43 UTC M3.5 S39.89 E174.49 Depth: 127.8km ID:2025p170966



Scale based on Moratalla et al.(2021) and Worden et al.(2012) Version 1: Processed 2025-03-05T06:13:08Z

△ Seismic Instrument ○ Reported Intensity ★ Epicenter