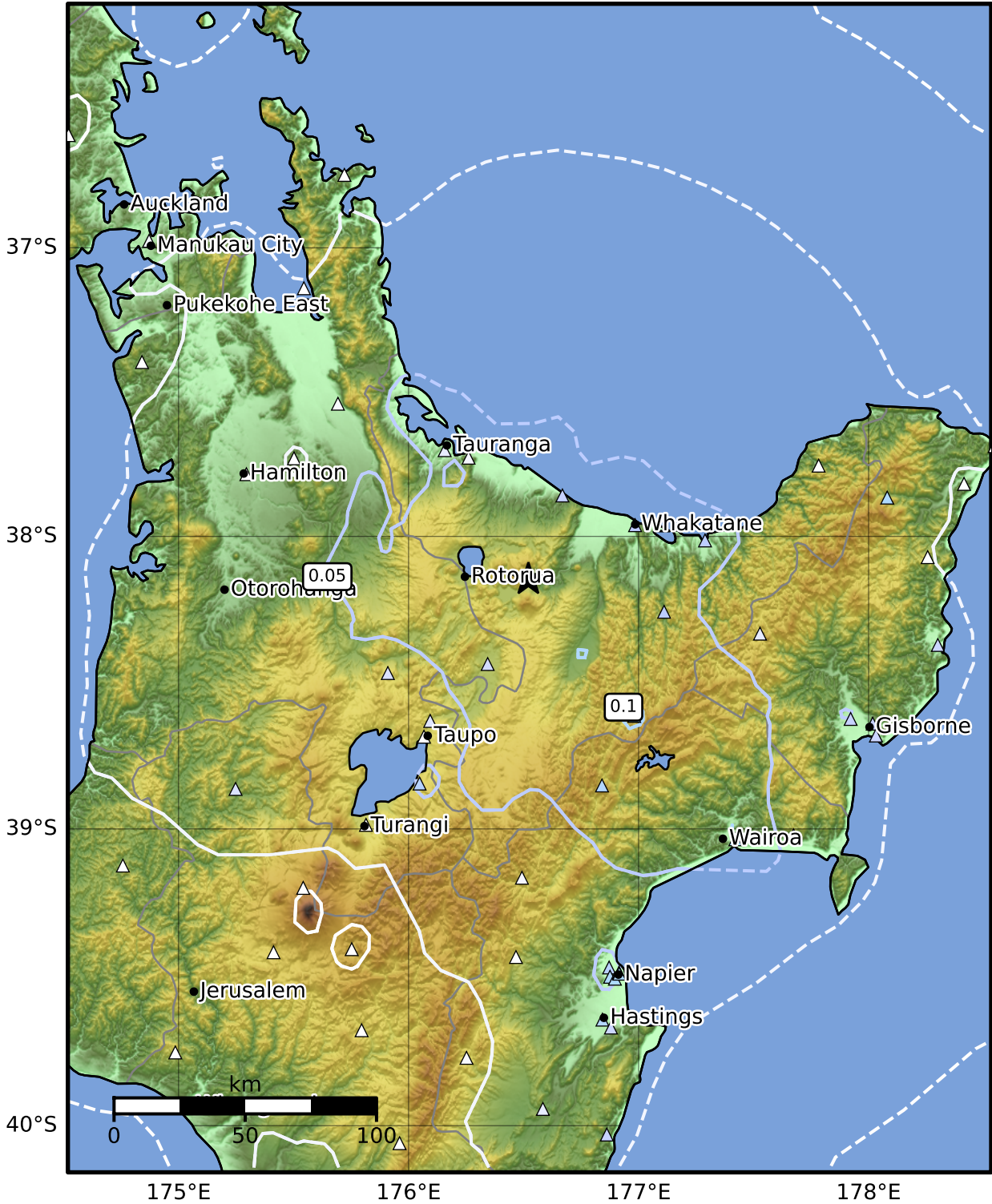


1.0 Second Peak Spectral Acceleration Map GNS Science
ShakeMap: Rotorua

Apr 06, 2025 10:57:08 UTC M4.3 S38.15 E176.52 Depth: 122.6km ID:2025p257989



SA(1.0) (%g)	0.1	0.2	0.5	1	2	5	10	20	50	100	200
---------------------	------------	------------	------------	----------	----------	----------	-----------	-----------	-----------	------------	------------

Scale based on Moratalla et al.(2021) and Worden et al.(2012) Version 1: Processed 2025-04-06T11:09:19Z
 Δ Seismic Instrument ○ Reported Intensity ★ Epicenter